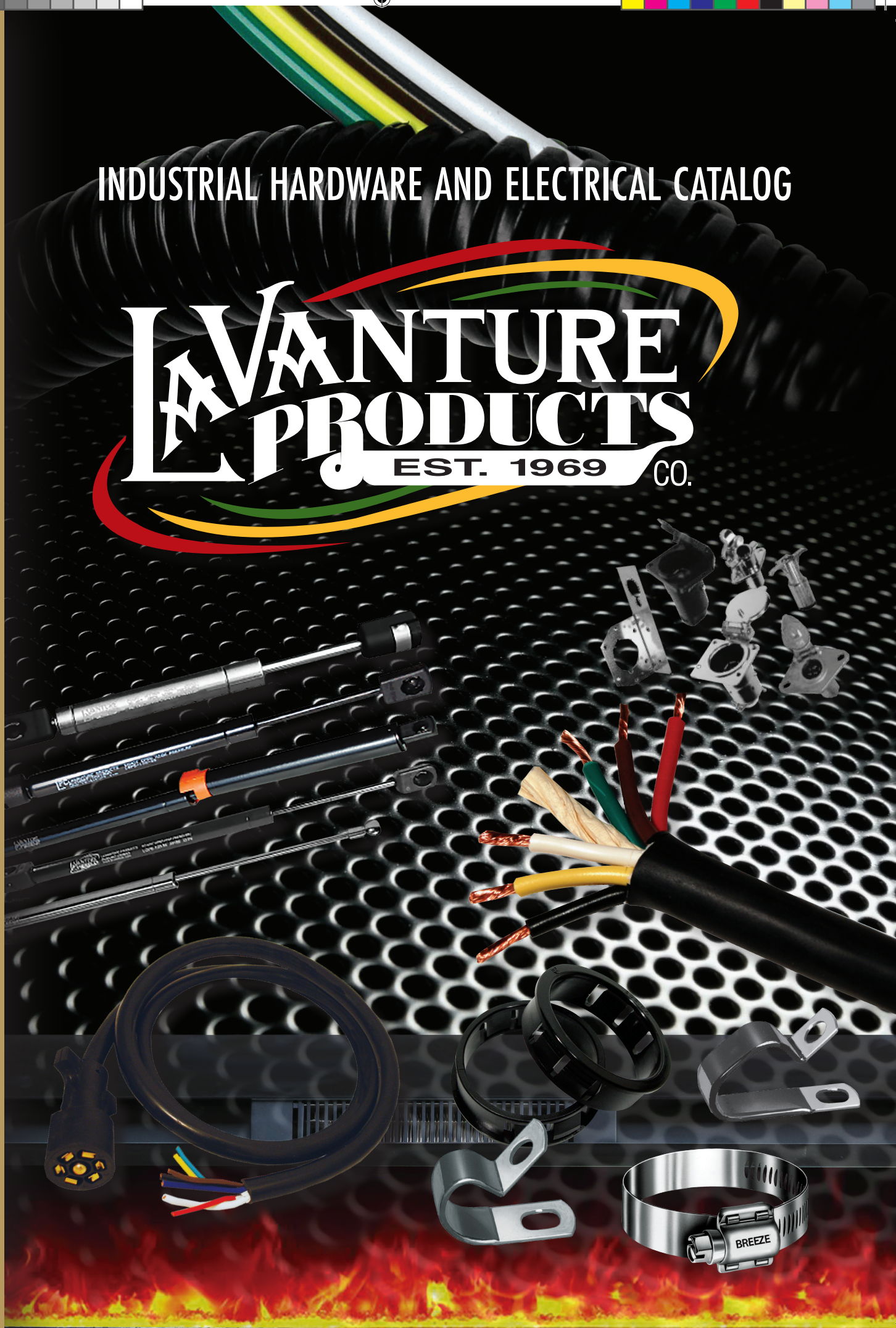


INNOVATIVE PRODUCTS FOR CHALLENGING APPLICATIONS

INDUSTRIAL HARDWARE AND ELECTRICAL CATALOG

LAVANTURE PRODUCTS

EST. 1969 CO.





THE LAVANTURE ADVANTAGE...

Since 1969 LaVanture Products Company has been providing the best total package of products and services to our customers. We invest in our future so we can continue to meet market demands and customer needs. When you select LaVanture Products, you provide your business with the LaVanture advantage:

- Quick & Personal Response
- Quality Products
- Continuous Innovation
- Competitive Pricing
- Courteous Service
- On time Delivery

This hardware catalog features innovation, and high quality products to meet the challenging applications of today's markets.

Our Goals are Simple:

Distribute high quality products that meet customer needs at a fair price with on-time delivery.

Visit us on-line at www.lavanture.com for information on all our quality products.



www.lavanture.com | 800.348.7625 | sales@lavanture.com

TABLE OF CONTENTS

Convuluted Conduit	Pages 3-6
Polyethylene, Polyethylene RVT, Polypropylene Fire Retardant, Nylon, Specialty Conduit	
Vinyl Coated Steel Clamps	Pages 7-8
Flared-Edge, Closed, Double Tube, J, Cushioned	
Bushings and Plugs	Pages 9-10
Snap, Shorty, Open/Closed, Universal Bushings, Vent Plugs, Dome/Hole Plugs	
Cable Ties	Page 11
Standard, Ultraviolet, Screw Mount	
Wire Managers	Page 12
Cable Tie Mounts, Wire Clips, Cable Clamps	
Hose Clamps	Pages 13-16
Power-Seal, Miniature, Marine Grade, Aero-Seal, T-Bolt, Constant Torque, Liner	
Electrical Wiring	Pages 17-18
T.E.W. Primary Wire, Trailer Cable, Trailer Brake Cable, Bonded Ribbon Cable, Speaker Wire	
Pollak Connectors and Adapters	Pages 19-20
4-Way, 6 -Way & 7- Way Connectors, Heavy Duty Connectors & Adapters, EZ Adapters, Wishbone Trailer Harnesses	
Wiring Accessories	Pages 21-23
Scotch-Lok Connectors, Ring terminals, Butt Splices, Wire Connectors, Heat shrink Tubing, Fuses, Fuse Holders, Circuit Breakers	
Smoke and Gas Detectors	Page 24
Carbon Monoxide/Smoke Detectors, LP Gas Detectors, Ion Smoke Detectors	
Fire Extinguishers	Pages 25-26
Multi-Purpose, Single Purpose, Rechargeable Extinguishers and Mounting Brackets	
Highway Safety Triangles	Pages 26
Kit of three triangles in high-density plastic case and mounting brackets	
Fireplaces	Pages 27-28
Kit of three triangles in high-density plastic case and mounting brackets	
Industrial Tapes	Pages 29-31
Duct, Masking, Carpet, Black Bottom Board, Painter, Foil, Electrical, Strapping, Carton, Anti-Slip, Shrink Wrap	
Conspicuity Tape	Page 32
3M Diamond Grade Conspicuity Tapes	
Hose Products	Pages 33-35
Pressure, Tubing, Drain, Helix, Vent, Reinforced, Sewer, Smooth-Bor, Saniflex, Water, Specialty, Custom	
Water Tanks	Page 36
Rotational Molded O.E.M. Polyethylene Water Tanks	
Access Covers	Page 36
Screw-In Access Covers	
Valterra Plumbing Products	Pages 37-48
Waste Valve Assemblies, EZ Hose Carriers, Solid Extension Tubes, Caps, Adapters, Inlets, Hatches, Sewersolutions, Assorted Accessories	
Fastening Devices	Pages 49-50
Baggage Locks, Compartment Latches, Baggage Lock Cams, Rope Rings, Hold-Downs	
Dock Bumpers	Page 50
Heavy duty black rubber dock bumpers with mounting holes manufactured from 100% recycled materials	
Tite-Lok Clamps	Pages 51-52
Classic, C-Style, Rail Hugging, Rocking, Lid & Tonneau	
Spray Products	Page 53-54
Krylon Paint, Silicone Lube, Industrial Adhesive, Insulating Foam, Glass Cleaner, Rubberized Undercoating	
Gas Sprngs and Accessories	Page 55-64
Full Line of Black Nitride & Stainless Steel Gas Springs and Accessories	



TABLE OF CONTENTS





Drossbach Convolved Conduit

LaVanture Products is a major distributor of convoluted plastic conduit manufactured by Drossbach. As a leader in the Convoluted Tubing Industry, with facilities in the U. S. and Canada, Drossbach continues to develop dynamic new products to meet the challenges of today's markets. Their disciplined approach and skilled production staff, coupled with a modern well equipped manufacturing facility guarantees that the highest quality products are provided to LaVanture as a distributor allowing us to meet our commitment of quality products and customer service.

**OVER
30 MILLION FEET
IN STOCK**

**For Immediate
Delivery**

CONVOLUTED CONDUIT

Convoluted Conduit

Plastic convoluted tubing is a corrugated tube used to provide protection to a wire harness or any other product that may be subject to abnormal conditions, such as:

- Continuous abrasion and vibrational wear
- Puncturing
- Water, snow, ice or salt
- UV Rays

You will also hear convoluted tubing referred to by several other names including.

- | | | |
|---------------------|-----------------|---------------|
| • Corrugated tubing | • Loom | • Flex tubing |
| • Wire conduit | • Split loom | • Snake Skin |
| • Convoluted loom | • Ribbed tubing | |

Convoluted Conduit is used in wide variety of industries in a wide range of applications:

- | | | |
|---------------------------|-----------------------------|--------------------------|
| • Automotive | • Farm/Agriculture | • Telecommunications |
| • Aftermarket | • Construction Vehicles | • Specialty Applications |
| • Computer/Electronics | • Marine | • Mass Transit Industry |
| • Emergency Vehicle | • Recreational Vehicles | |
| • Robotics and Automation | • Electrical Wire Harnesses | |



Polyethylene

Convoluted Conduit

Stock No.	Description	Slit	Color	Container	Carton Qty.
8125B	1/4" Polyethylene	Yes	Black	Carton	3200'
8125BG	1/4" Polyethylene	Yes	Black	Gaylord	25000'
8134B	3/8" Polyethylene	Yes	Black	Carton	1900'
8134BG	3/8" Polyethylene	Yes	Black	Gaylord	15000'
8135B	7/16" Polyethylene	Yes	Black	Carton	1500'
8135BG	7/16" Polyethylene	Yes	Black	Gaylord	12000'
8136B	1/2" Polyethylene	Yes	Black	Carton	1100'
8136BG	1/2" Polyethylene	Yes	Black	Gaylord	8500'
8138B	5/8" Polyethylene	Yes	Black	Carton	800'
8138BG	5/8" Polyethylene	Yes	Black	Gaylord	5500'
8140B	3/4" Polyethylene	Yes	Black	Carton	550'
8140BG	3/4" Polyethylene	Yes	Black	Gaylord	4200'
8141B	7/8" Polyethylene	Yes	Black	Carton	400'
8141BG	7/8" Polyethylene	Yes	Black	Gaylord	3000'
8142B	1" Polyethylene	Yes	Black	Carton.	300'
8142BG	1" Polyethylene	Yes	Black	Gaylord	2250'
81125B	1-1/4" Polyethylene	Yes	Black	Carton	250'
81125BG	1-1/4" Polyethylene	Yes	Black	Gaylord	1800'
81150B	1-1/2" Polyethylene	Yes	Black	Carton	150'
81150BG	1-1/2" Polyethylene	Yes	Black	Gaylord	1000'
81200B	2" Polyethylene	Yes	Black	Carton	100'
8140BS	3/4" Polyethylene	No	Black	Carton	450'
8140BSG	3/4" Polyethylene	No	Black	Gaylord	3000'
81125BS	1-1/4" Polyethylene	No	Black	Carton	200'
81150BS	1-1/2" Polyethylene	No	Black	Carton	100'

Polyethylene RVT

Convoluted Conduit

Stock No.	Description	Slit	Color	Container	Carton Qty.
RVT25	1/4" Polyethylene, shallow	Yes	Black	Carton	3200'
RVT25G	1/4" Polyethylene, shallow	Yes	Black	Gaylord	25000'
RVT37	3/8" Polyethylene, shallow	Yes	Black	Carton	1900'
RVT37G	3/8" Polyethylene, shallow	Yes	Black	Gaylord	15000'
RVT50	1/2" Polyethylene, shallow	Yes	Black	Carton	1100'
RVT50G	1/2" Polyethylene, shallow	Yes	Black	Gaylord	8500'
RVT62	5/8" Polyethylene, shallow	Yes	Black	Carton	800'
RVT62G	5/8" Polyethylene, shallow	Yes	Black	Gaylord	6000'
RVT75	3/4" Polyethylene, shallow	Yes	Black	Carton	600'
RVT75G	3/4" Polyethylene, shallow	Yes	Black	Gaylord	4200'
RVT10	1" Polyethylene, shallow	Yes	Black	Carton	350'
RVT10G	1" Polyethylene, shallow	Yes	Black	Gaylord	3000'
RVT75S	3/4" Polyethylene, shallow	No	Black	Carton	500'
RVT37S	3/8" Polyethylene, shallow	No	Black	Carton	1500'

Installation Tool

Stock No.	Description	Carton Qty.
SLT-008	1/4" X 7/16" Installation Tool	1 pc.
SLT-015	1/2" x 5/8" Installation Tool	1 pc.
SLT-020	3/4" x 7/8" Installation Tool	1 pc.
SLT-025	1" x 1-1/4" Installation Tool	1 pc.
SLT-032	1-1/2" x 2" Installation Tool	1 pc.



Polyethylene Conduit Series 8100B

Manufactured from high quality polyethylene thermoplastics, series 8100B convoluted conduit, with a materials operating range of -40 ° F to 200 ° F to provide protection from:

- Abrasion & vibration
- Puncturing
- Water, snow, ice or salt
- UV rays

Series 8100B meets most automotive specification requirements, and is available slit or un-slit, black only, and packaged in cartons or gaylords.

Most Convoluted Conduit is Slit for Easy Insertion. Check Specification Charts for Information.

Polyethylene Utility Conduit Series RVT

Manufactured from low density polyethylene thermoplastics, series RVT convoluted conduit was designed with a shallow convolution for economy utility use. It is available slit or un-slit, black only, and packaged in cartons or gaylords. Also available in nylon.

Wire Assembly Tool

Manufactured from high impact plastic. This tool was designed to assist in feeding slit conduit over wiring. It is available in 3 models to accommodate conduit sizes from 1/4" to 2".

CONVOLUTED CONDUIT

Tubing is slit for easy wire Insertion!

Polypropylene Flame Retardant Conduit Series 8100BF

manufactured from flame retardant polypropylene thermoplastics, series 8100BF convoluted conduit, with a materials operating range of -40 °F to 275 °F, was manufactured to meet the stringent requirements of the automotive and marine industries where extreme temperatures may be a factor. Series 8100BF meets UL-92-V2 regulations for flame retardation, and is available slit or un-slit, black only, and packaged in cartons or gaylords.

Nylon Convoluted Conduit Series 8100N

manufactured from 100% high quality nylon, series 8100N conduit boasts the highest operating range of -40 °F to 300 °F to provide maximum protection from:

- Abrasion and vibration wear
- Puncturing
- Water, snow, ice or salt
- UV rays

Series 8100N meets most automotive specification requirements, and is available slit or un-slit, black only, and packaged in cartons or gaylords. Also available in RVT Series.

Polypropylene Flame Retardant Conduit

Stock No.	Description	Slit	Color	Container	Carton Qty.
8125BF	1/4" Polypropylene Flame Ret.	Yes	Black/Blue stripe	Carton	3200'
8134BF	3/8" Polypropylene Flame Ret.	Yes	Black/Blue stripe	Carton	1800'
8134BFG	3/8" Polypropylene Flame Ret.	Yes	Black/Blue stripe	Gaylord	12500'
8136BF	1/2" Polypropylene Flame Ret.	Yes	Black/Blue stripe	Carton	1100'
8138BF	5/8" Polypropylene Flame Ret.	Yes	Black/Blue stripe	Carton	750'
8138BFG	5/8" Polypropylene Flame Ret.	Yes	Black/Blue stripe	Gaylord	5500'
8140BF	3/4" Polypropylene Flame Ret.	Yes	Black/Blue stripe	Carton	500'
8140BFG	3/4" Polypropylene Flame Ret.	Yes	Black/Blue stripe	Gaylord	4200'
8141BF	7/8" Polypropylene Flame Ret.	Yes	Black/Blue stripe	Carton	400'
8141BFG	7/8" Polypropylene Flame Ret.	Yes	Black/Blue stripe	Gaylord	3000'
8142BF	1" Polypropylene Flame Ret.	Yes	Black/Blue stripe	Carton	300'
8142BFG	1" Polypropylene Flame Ret.	Yes	Black/Blue stripe	Gaylord	2250'
81150BF	1-1/2" Polypropylene Flame Ret.	Yes	Black/Blue stripe	Carton	100'
8136BU	1/2" Polypropylene Flame Ret.	Yes	Green	Carton	1100'

RVT Nylon Series

RVT25N	1/4" Nylon shallow	Yes	Black/Gray stripe	Carton	3200'
RVT25NG	1/4" Nylon shallow	Yes	Black/Gray stripe	Gaylord	28000'
RVT37N	3/8" Nylon shallow	Yes	Black/Gray stripe	Carton	1900'
RVT37NG	3/8" Nylon shallow	Yes	Black/Gray stripe	Gaylord	15,000'
RVT50N	1/2" Nylon shallow	Yes	Black/Gray stripe	Carton	1100'
RVT50NG	1/2" Nylon shallow	Yes	Black/Gray stripe	Gaylord	8500'
RVT62N	5/8" Nylon shallow	Yes	Black/Gray stripe	Carton	800'
RVT62NG	5/8" Nylon shallow	Yes	Black/Gray stripe	Gaylord	6000'
RVT75N	3/4" Nylon shallow	Yes	Black/Gray stripe	Carton	600'
RVT75NG	3/4" Nylon shallow	Yes	Black/Gray stripe	Gaylord	4200'
RVT10N	1" Nylon shallow	Yes	Black/Gray stripe	Carton	400'
RVT10NG	1" Nylon shallow	Yes	Black/Gray stripe	Gaylord	3000'

Nylon Convoluted Conduit

Stock No.	Description	Slit	Color	Container	Carton Qty.
8125N	1/4" Nylon	Yes	Black/Gray stripe	Gaylord	3200'
8125NG	1/4" Nylon	Yes	Black/Gray stripe	Gaylord	28000'
8134N	3/8" Nylon	Yes	Black/Gray stripe	Carton	1900'
8134NG	3/8" Nylon	Yes	Black/Gray stripe	Gaylord	1500'
8136N	1/2" Nylon	Yes	Black/Gray stripe	Carton	1100'
8136NG	1/2" Nylon	Yes	Black/Gray stripe	Gaylord	8500'
8138N	5/8" Nylon	Yes	Black/Gray stripe	Carton	800'
8138NG	5/8" Nylon	Yes	Black/Gray stripe	Gaylord	5500'
8140N	3/4" Nylon	Yes	Black/Gray stripe	Carton	600'
8140NG	3/4" Nylon	Yes	Black/Gray stripe	Gaylord	4200'
8142N	1" Nylon	Yes	Black/Gray stripe	Carton	300'
8142NG	1" Nylon	Yes	Black/Gray stripe	Gaylord	2250'
81125N	1-1/4" Nylon	Yes	Black/Gray stripe	Carton	250'
81125NG	1" Nylon	Yes	Black/Gray stripe	Gaylord	1800'
81150N	1-1/2" Nylon	Yes	Black/Gray stripe	Carton	150'
81150NG	1-1/2" Nylon	Yes	Black/Gray stripe	Gaylord	2800'
8134NSG	3/8" Nylon	No	Black/Gray stripe	Gaylord	10000'
8142NS	1" Nylon	No	Black/Gray stripe	Carton	250'
81150NS	1-1/2" Nylon	No	Black/Gray stripe	Carton	100'
8138NSBG	5/8" Nylon	No	Black	Gaylord	4000'
8140NSB	3/4" Nylon	No	Black	Carton	500'
8140NSBG	3/4" Nylon	No	Black	Gaylord	3000'
8141NSBG	7/8" Nylon	No	Black	Gaylord	2500'
8142NSB	1" Nylon	No	Black	Carton	250'
8142NSBG	1" Nylon	No	Black	Gaylord	2000'
81125NSBG	1-1/4" Nylon	No	Black	Gaylord	1500'
81150NSBG	1-1/2" Nylon	No	Black	Gaylord	800'

Most Convoluted Conduit is Slit for Easy Insertion. Check Specification Charts for Information.

Specialty Convoluted Conduit Products

Working with our supplier Drossbach, we offer a wide variety of Specialty Convoluted Products including:



Cuffed Hose
Convoluted Conduit

Cuffed Hose Convoluted Conduit

Cuffed Hose Product is designed to make it easy to attach fittings. Cuffed Hose is used in a range of applications including: Bilge Pumps, Medical, Drain Hose and other special applications. It is available in bulk, coils or cut to length in standard black and white colors. It can be customized to meet your specific requirements. Please contact us for product information and availability.

Slotted Convoluted Conduit

Slotted Convoluted Conduit offers excellent drainage for construction equipment, agricultural equipment, ATVs, heavy trucks, cement trucks, motorcycles, snow mobiles, marine and other applications. Slit at 12 o'clock, it has continuous slots at 3 o'clock, 6 o'clock and 9 o'clock, making it great for vehicles used in off road environments that face exposure to rain, automotive fluids, salt and slush, and those that need better drainage.

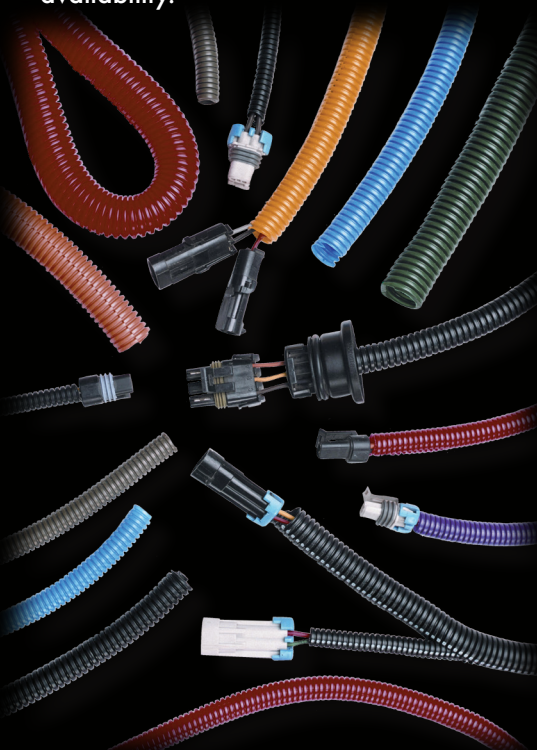
Compared to regular slit tubing, this slotted loom offers better air flow, breathing and cooling for wire cables and hoses. Please contact us for product information and availability.



Color Convoluted Conduit

Custom Convoluted Conduit Products

Custom products are available in a variety of thermoplastics in many shapes and sizes. We provide full service assistance to customers by manufacturing parts designed specifically to meet your requirements and specifications with custom tooling and prototypes. Please contact us for all your custom convoluted requirements.



Custom Convoluted Conduit

www.lavanture.com | 800.348.7625 | sales@lavanture.com

*Most Convoluted Conduit is Slit for Easy Insertion.
Check Specification Charts for Information.*



Carton Size

21" x 21" x 21"
Parcel Approved
Average weight: 30lbs



Gaylord Size

44" x 44" x 45"
Including Skid.
Average weight: 200lbs

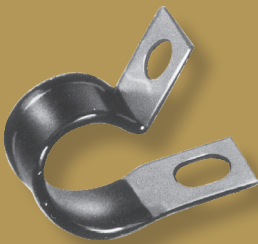
Industry Applications

- Heavy Equipment
- Aircraft and Military
- Lawn, Garden and Home Appliance
- Agricultural Equipment
- Marine
- Computer and Electronics
- Automotive, Trucks, Buses, Trailers and RV's

CONVOLUTED CONDUIT

Closed Clamps,
Flared Edge,
Double Tube
and J Clamps

LaVanture Products
stocks a variety of vinyl
coated, cushioned clamps.
Manufactured in the USA
since 1908 by a QS-9002
qualified system com-
pany with a key objective
of producing defective free
products.



VINYL COATED STEEL CLAMPS

Call your LaVanture
account representative
for information.



Closed Clamps – Furnished Open									
Stock No.	Clamping Diameter	Hole Diam-eter	Center To Center	Width	Hole To End	Center Gap	Gage	Slot Length	Carton Quan-tity
COV0509Z1	.250"	.281"	.531"	.500"	.312"	.031"	.032"	.375"	1000
COV0709Z1	.375"	.281"	.593"	.500"	.312"	.062"	.032"	.375"	1000
COV0909Z1	.500"	.281"	.656"	.500"	.312"	.062"	.048"	.375"	1000
COV1109Z1	.625"	.281"	.718"	.500"	.312"	.062"	.048"	.375"	1000
COV1309Z1	.750"	.281"	.781"	.500"	.312"	.062"	.048"	.375"	1000
COV1509Z1	.875"	.281"	.843"	.500"	.312"	.062"	.048"	.375"	1000
COV1709Z1	1.000"	.281"	.906"	.500"	.312"	.062"	.048"	.375"	1000
COV2109Z1	1.250"	.281"	1.031"	.500"	.312"	.062"	.048"	.375"	500
COV2509Z1	1.500"	.281"	1.156"	.500"	.312"	.062"	.048"	.375"	500
COV2513Z1	1.500"	.406"	1.281"	.750"	.437"	.062"	.048"	.500"	250
COV2909Z1	1.750"	.281"	1.281"	.500"	.312"	.062"	.048"	.375"	500
COV3309Z1	2.000"	.281"	1.437"	.500"	.312"	.062"	.048"	.375"	500
COV3313Z1	2.000"	.406"	1.562"	.750"	.437"	.062"	.048"	.500"	250
COV4113Z1	2.500"	.406"	1.812"	.750"	.437"	.062"	.048"	.500"	250
COV4913Z1	3.000"	.406"	2.062"	.750"	.437"	.062"	.048"	.500"	200
Flared Edge Clamps									
Stock No.	Clamping Diameter	Center to Center	Hole Diameter	Width	Hole Center To End	Slot Center To End	Slot Length	Carton Quantity	
CFV0809Z1	0.437"	0.625"	0.281"	0.5"	0.25"	0.296"	0.375"	1000	
CFV0909Z1	0.500"	0.656"	0.281"	0.5"	0.25"	0.296"	0.375"	1000	
CFV1109Z1	0.625"	0.718"	0.281"	0.5"	0.25"	0.296"	0.375"	1000	
CFV1309Z1	0.750"	0.781"	0.281"	0.5"	0.25"	0.296"	0.375"	1000	
CFV1409Z1	0.812"	0.812"	0.281"	0.5"	0.25"	0.296"	0.375"	1000	
CFV1509Z1	0.875"	0.843"	0.281"	0.5"	0.25"	0.296"	0.375"	1000	
CFV1709Z1	1.00"	0.906"	0.281"	0.5"	0.25"	0.296"	0.375"	1000	
Double Tube Clamps									
Stock No.	Hole Diameter	Center To Center	Width	Hole Center To End	Gap	Gage	Slot Length	Carton Quantity	
CDV1611Z1	.343"	.968"	.625"	.375"	.062"	.060"	.437"	250	
J Clamps									
Stock#	Clamping Diameter	Hole Diameter	Center To Center	Width	Hole Center To End	Gage	Carton Quantity		
CJV1009Z1	.562"	.281"	1.125"	.500"	.250"	.048"	1000		
CJV1309Z1	.750"	.281"	1.250"	.500"	.250"	.048"	1000		
Cushion Clamps									
Stock No.	Clamping Diameter	Hole Diameter	Width	Hole Center To End	Center To Center	Length	Carton Quantity		
COL0409Z1	0.25"	0.281"	0.50"	0.312"	0.674"	.375"	1000		
COL0413Z1	0.25"	0.406"	0.75"	0.437"	0.656"	0.50"	1000		
COL0609Z1	0.375"	0.281"	0.50"	0.312"	0.593"	0.375"	500		
COL0809Z1	0.50"	0.281"	0.50"	0.312"	0.656"	0.375"	1000		
COL1009Z1	0.625"	0.281"	0.50"	0.312"	0.781"	0.375"	500		
COL1209SS*	.0750"	0.281"	0.50"	0.312"	0.843"	0.375"	500		
COL1209Z1	.0750"	0.281"	0.50"	0.312"	0.843"	0.375"	500		
COL1409Z1	0.875"	0.281"	0.50"	0.312"	0.906"	0.375"	1000		
COL1609Z1	1.00"	0.281"	0.50"	0.312"	0.968"	0.375"	1000		
COL1613Z1	1.00"	0.406"	0.75"	0.437"	1.093"	0.500"	500		
COL2009Z1	1.250"	0.281"	0.50"	0.312"	1.093"	0.375"	500		
COL2409Z1	1.500"	0.281"	0.50"	0.312"	1.218"	0.375"	1000		
COL2609Z1	1.625"	0.281"	0.50"	0.312"	1.281"	0.375"	500		
* COL1209SS is Stainless Steel all other Cushion Clamps are Zinc									

Closed Clamps

"furnished open"

The most widely used of the loop-type steel clamps; they can be snapped over the tube or wire and closed with the bolt at assembly. The medium-duty "CO" series for bolt sizes 1/4" to 1/2" has one round and one slotted hole for easy alignment. Contoured to minimize distortion during closing.

COV CLOSED CLAMPS

Material: HD Galv. Steel, Chem-Treated G90 per
ASTM A653/A653M
Cushion: Black Vinyl, 1/32" Thick
Holes: One Round and One Slotted Hole



Flared-Edge Clamps

These light-duty clips have the edges flared around the clamping loop to prevent abrasion from the edges of the steel. They are also made contoured for ease of closing. CFV parts have one round and one slotted hole.

CFV FLARED EDGE CLAMPS

Material: HD Galv. Steel, Chem-Treated G90 per
ASTM A653/A653M
Cushion: Black Vinyl, 1/32" Thick
Holes: One Round and One Slotted Hole



Double Tube Clamps

For clamping two tubes of the same diameter. CDV parts have one round and one slotted hole.

CDV DOUBLE TUBED CLAMPS

Material: HD Galv. Steel, Chem-Treated G90 per
ASTM A653/A653M
Cushion: Black Vinyl, 1/32" Thick
Holes: One Round and One Slotted Hole

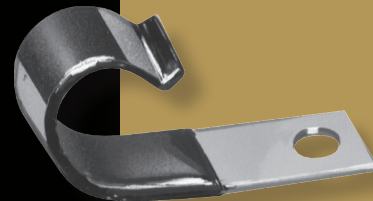


J Clamps

When it is desirable to assemble the clamp and add wiring later, this is an excellent choice. Against a rigid surface, it can be closed easily with a screwdriver blade. Pliers or fingers can be used for closing if the back is not supported. The loop portion is contoured.

CJV J CLAMPS

Material: HD Galv. Steel, Chem-Treated G90 per
ASTM A653/A653M
Cushion: Black Vinyl, 1/32" Thick
Holes: One Round Hole



Cushioned Clamp

LaVanture's new extruded series cushion clamps are manufactured with EPDM cushion material and optional neoprene or silicone cushion materials for high temperature applications.

- Black EPDM per SAE Specifications
- Black Neoprene per AMS3209 Specifications
- Red/Orange Silicone per AMS3303 Specifications



VINYL COATED STEEL CLAMPS



Snap Bushings



Shorty Bushings



Open/Closed Bushings

Snap Bushings

Convert raw-edged holes to smooth, neat, insulated holes. Snaps into hole with fingertip pressure and withstands a push back force of 35#. Insulates and mechanically protects electrical, telecommunication cables, tubing, hose, rope and many other applications. Made of Nylon 6/6 material.

Snap Bushings

Stock No.	Color	Hole Diameter	Maximum Thickness	Head Diameter	Thickness	Carton Quantity
SB250-2	Black	.250"	.062"	.312"	.312"	1000
SB375-4	Black	.375"	.125"	.468"	.406"	1000
SB437-4	Black	.437"	.125"	.531"	.406"	1000
SB437-5	Black	.437"	.125"	.587"	.406"	1000
SB500-6	Black	.500"	.125"	.578"	.406"	1000
SB562-7	Black	.562"	.125"	.656"	.406"	1000
SB625-8	Black	.625"	.125"	.718"	.406"	1000
SB750-10	Black	.750"	.125"	.843"	.406"	1000
SB875-11	Black	.875"	.125"	.953"	.453"	500
SB1000-12	Black	1.000"	.125"	1.125"	.453"	500
SB1000-12W	White	1.000"	.125"	1.125"	.453"	500
SB1093-15	Black	1.093"	.125"	1.218"	.453"	500
SB1250-15	Black	1.250"	.125"	1.359"	.453"	250
SB1375-16	Black	1.469"	.125"	1.468"	.453"	500
SB1500-21	Black	1.500"	.125"	1.609"	.453"	250
SBXL 1500-25	Black					
SB1750-22	Black	1.750"	.125"	1.875"	.453"	250
SB2000-26	Black	2.000"	.125"	2.125"	.453"	250
SB2500-31	Black	2.500"	.250"	2.660"	.720"	500
SB3000-39	Black	3.000"	.250"	3.160"	.720"	100
SB3500-47	Black	3.500"	.250"	3.660"	.720"	100

Shorty Bushings

Insulate feed-thru areas for limited internal clearance applications. Insulates and isolates electric or telecommunication cables as well as low RPM shafts and push-pull rods. Locking fingers hold securely after only fingertip pressure installation. Made of Nylon 6/6 material.

Shorty Bushings

Stock No.	Color	Hole Diameter	Maximum Thickness	Head Diameter	Thickness	Carton Quantity
B375-250	Black	.375"	.125"	.437"	.250"	1000
B500-375	Black	.500"	.125"	.562"	.250"	1000
B875-750	Black	.875"	.125"	.937"	.250"	1000

Open/Closed Bushings

Have a split design which allows side entry and encirclement of pre-assembled harnesses, capillary tubes or other assemblies that have segments larger than the bushing's I.D. May also be assembled into cable holes that already contain cable or tubing. Fingertip installation. Made of Nylon 6/6 material.

Open/Closed Bushings

Stock No.	Color	Hole Diameter	Maximum Thickness	Head Diameter	Thickness	Carton Quantity
OCB375	Black	.375"	.125"	.421"	.062"	1000
OCB500	Black	.500"	.125"	.562"	.062"	1000
OCB625	Black	.625"	.125"	.687"	.062"	1000
OCB875	Black	.875"	.125"	.921"	.062"	1000
OCB1000	Black	1.000"	.125"	1.062"	.062"	1000
OCB1500	Black	1.500"	.125"	1.578"	.062"	1000

Universal Bushings

Have flexible "shutters" which adjust to accommodate and support any shape. Absorbs vibration, cushions and insulates cables, tubing, hoses or shafts with limited internal clearance. Fingertip installation. Made of Nylon 6/6 material.

Universal Bushings						
Stock No.	Color	Hole Diameter	Maximum Thickness	Head Diameter	Thickness	Carton Quantity
UB625	Black	.625"	.125"	.718"	.406"	1000
UB750	Black	.750"	.125"	.859"	.390"	1000
UB875	Black	.875"	.125"	.937"	.453"	1000
UB1000	Black	1.000"	.125"	1.062"	.453"	1000
UB1093	Black	1.093"	.125"	1.156"	.453"	500
UB1500	Black	1.500"	.125"	1.61"	.453"	1000
UB3000	Black	3"	2.47"	3.15"	.750"	500



Universal Bushings

Vent Plugs

Permit the heat dissipation. Convex, matte finish head tapers to a thin edge. Locks firmly into place with only fingertip pressure. Made of Nylon 6/6 material.

Vent Plugs						
Stock No.	Color	Hole Diameter	Maximum Thickness	Head Diameter	Thickness	Carton Quantity
VP500	Black	.500"	.125"	.560"	4.680"	1000
VP750	Black	.750"	.125"	.906"	.406"	1000
VP875	Black	.875"	.125"	1.016"	.453"	1000
VP2000	Black	2.000"	.125"	2.140"	.468"	1000



Vent Plug

Dome/Hole Plugs

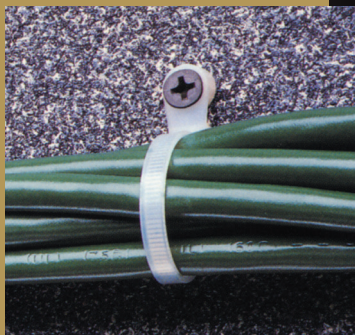
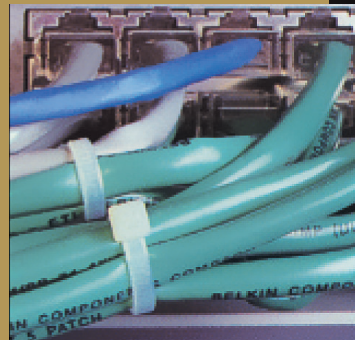
Close unneeded chassis holes. Convex, matte finish head tapers to a thin edge. Locks firmly into place with only fingertip pressure. Made of Nylon 6/6 material.

Dome/Hole Plugs						
Stock No.	Color	Hole Diameter	Maximum Thickness	Head Diameter	Thickness	Carton Quantity
DP250	Black	.250"	.125"	.312"	.312"	1000
DP375	Black	.375"	.125"	.468"	.406"	1000
DP500	Black	.500"	.125"	.578"	.406"	1000
DP625	Black	.625"	.125"	.718"	.406"	1000
DP625W	White	.625"	.125"	.718"	.406"	1000
DP750	Black	.750"	.125"	.922"	.406"	1000
DP875	Black	.875"	.125"	1.016"	.453"	1000
DP1000	Black	1.000"	.125"	1.203"	.453"	500
DP1093	Black	1.093"	.125"	1.218"	.453"	500
DP1250	Black	1.250"	.125"	1.375"	.453"	500
DP1500	Black	1.500"	.125"	1.672"	.453"	250
DP1750	Black	1.750"	.125"	1.906"	.453"	250
DP2000	Black	2.000"	.125"	2.140"	.453"	250
DP3000	Black	3.000"	.125"	3.171"	.750"	300



Dome Plug

BUSHINGS AND PLUGS



Standard Cable Ties

Available from 4" to 48" with tensile ratings from 18 pounds to 250 pounds. All cable ties are made of 100% natural nylon and feature our bent tip design for ease of application. Operating temperatures are from -40 to 185 degrees F. Our cable ties are UL approved and manufactured in a ISO-9002 facility.

Standard Cable Ties							
Stock No.	Color	Maximum Bundle Diameter	Tensile Strength Pounds	Length	Width	Bag Quantity	Bulk Pack
LPC-40	Natural	1"	18	4.0"	.10"	1,000	25,000
LPC-41	Natural	1.3"	40	5.9"	.13"	1,000	25,000
LPC-42	Natural	2.16"	50	8.0"	.19"	1,000	10,000
LPC-43	Natural	3.18"	50	11.0"	.19"	1,000	5,000
LPC-44	Natural	4"	50	14.5"	.19"	1,000	5,000
LPC-45HD	Natural	4"	120	14.5"	.29"	100	2,000
LPC-51HD	Natural	5.5"	175	21.0"	.35"	50	500
LPC-55HD	Natural	7.3"	175	24.0"	.35"	50	500
LPC-60HD	Natural	10.6"	175	37.0"	.35"	50	500

Ultraviolet Black Cable Ties

Designed to resist degradation by ultraviolet rays. Manufactured with black UV nylon material.

Ultraviolet Cable Ties							
Stock No.	Color	Maximum Bundle Diameter	Tensile Strength Pounds	Length	Width	Bag Quantity	Bulk Pack
LPC-40B	Black	1"	18	4.0"	.10"	1,000	25,000
LPC-41B	Black	1.3"	40	5.9"	.13"	1,000	25,000
LPC-42B	Black	2.16"	50	8.0"	.19"	1,000	10,000
LPC-43B	Black	3.18"	50	11.0"	.19"	1,000	5,000
LPC-44B	Black	4"	50	14.5"	.19"	1,000	5,000
LPC-45HDB	Black	4"	120	14.5"	.29"	100	2,000
LPC-51HDB	Black	5.5"	175	21.0"	.35"	50	500
LPC-55HDB	Black	7.3"	175	24.0"	.35"	50	500
LPC-60HDB	Black	10.6"	175	37.0"	.35"	50	500

Screw Mount Cable Ties

Use a screw eye to position and secure bundled harnesses with a #10 size screw, bolt or rivet. Manufactured with the same care as our standard cable ties.

Available in both natural and black UV nylon material.

Screw Mount Cable Ties							
Stock No.	Color	Maximum Bundle Diameter	Tensile Strength Pounds	Length	Width	Bag Quantity	Bulk Pack
LPC-42SM	Natural	2.3"	50	8.0"	.19"	1,000	10,000
LPC-42SMB	Black	2.3"	50	8.0"	.19"	1,000	10,000
LPC-43SM	Natural	2.9"	50	11.0"	.19"	1,000	5,000
LPC-44SM	Natural	4"	50	14.5"	.19"	1,000	5,000
LPC-44SMB	Black	4"	50	14.5"	.19"	1,000	5,000

Cable Tie Mounts

Are adhesive backed for easy installation. Made of Nylon 6/6 material which can secure 18 to 50 pound cable ties to most clean and dry surfaces.

Cable Tie Mounts			
Stock No.	Size Inches	Color	Bag Quantity
FTH5	.50"	Natural	1,000
FTH7	.75"	Natural	1,000
FTH11	1.1"	Natural	1,000



Adhesive-Backed Wire Clips

Have an expanding, low profile, design which allows for a larger wire range. Quick and easy installation, simply peel off backing and press into place. A quality wire management device.

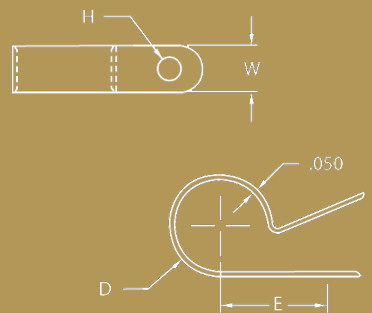
Adhesive-Backed Wire Clips			
Stock No.	Size Inches	Color	Bag Quantity
KKD8	.375"	White	1,000
KKD10	1.000"	Gray	700



Nylon Cable Clamps

Molded by a leading manufacturer of nylon products. These heavy-duty nylon clamps secure, insulate and route cable, wiring, tubing, piping and fiber optics. Tough, durable, and chemical resistant, these nylon 6/6 cable clamps are perfect for applications in electronics, automotive, aircraft, appliance and many other industries. All contact edges have a full radius for product protection. Sizes are clearly marked on each clamp.

Nylon Cable Clamps							
Stock No.	Color	I.D. Diameter (D)	Band Width (W)	Mount Hole (H)	I.D. Center To Mount Hole Center (E)	Bag Quantity	Bulk Pack
LPC-2	Black	0.125"	0.375"	0.203"	0.315"	1,000	20,000
LPC-2W	White	0.125"	0.375"	0.203"	0.315"	1,000	20,000
LPC-3	Black	0.188"	0.375"	0.167"	0.425"	1,000	20,000
LPC-3W	White	0.188"	0.375"	0.167"	0.425"	1,000	20,000
LPC-4	Black	0.250"	0.375"	0.203"	0.410"	1,000	20,000
LPC-4W	White	0.250"	0.375"	0.203"	0.410"	1,000	20,000
LPC-5	Black	0.313"	0.375"	0.167"	0.500"	1,000	20,000
LPC-5W	White	0.313"	0.375"	0.167"	0.500"	1,000	20,000
LPC-6	Black	0.375"	0.375"	0.203"	0.530"	1,000	20,000
LPC-6W	White	0.375"	0.375"	0.203"	0.530"	1,000	20,000
LPC-8	Black	0.500"	0.375"	0.203"	0.595"	1,000	20,000
LPC-8W	White	0.500"	0.375"	0.203"	0.595"	1,000	20,000
LPC-10	Black	0.652"	0.500"	0.203"	0.655"	1,000	10,000
LPC-10W	White	0.652"	0.500"	0.203"	0.655"	1,000	10,000
LPC-12	Black	0.750"	0.500"	0.203"	0.780"	1,000	10,000
LPC-12W	White	0.750"	0.500"	0.203"	0.780"	1,000	10,000
LPC-14	Black	0.875"	0.500"	0.203"	0.845"	1,000	5,000
LPC-14W	White	0.875"	0.500"	0.203"	0.845"	1,000	5,000
LPC-16	Black	1.000"	0.500"	0.203"	0.910"	1,000	5,000
LPC-16W	White	1.000"	0.500"	0.203"	0.910"	1,000	5,000
LPC-24	Black	1.250"	0.500"	0.203"	1.060"	500	5,000
LPC-24W	White	1.250"	0.500"	0.203"	1.060"	500	5,000
LPC-28W	White	1.500"	0.500"	0.203"	1.190"	500	3,000



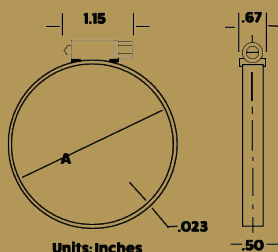
WIRE MANAGERS AND PLASTIC CLAMPS



LaVanture Products distributes a full line of high quality stainless steel hose clamps to fit a wide variety of applications. From a leading U.S. manufacturer these clamps are designed to meet our high quality standards and have passed rigid testing programs.

Hose Clamps are versatile accessories that help you complete any job that requires a connection between a hose or tube and another object. From plumbing and auto repair to marine applications, hose clamps keep connections from leaking or bursting. LaVanture offers a wide selection of clamps for a variety of projects.

STAINLESS HOSE CLAMPS



62000 POWER-SEAL
5/16" Plated Hex Screw
1/2" Band in 300-Series SS
Two-Piece Housing in 300-Series SS

64000 POWER-SEAL
5/16" 410 Stainless Steel Hex Screw
1/2" Band in 410 Stainless Steel
Two-Piece Housing in 300-Series SS

63000 POWER-SEAL
5/16" 300-Series SS Hex Screw
1/2" Band in 300-Series SS
Two-Piece Housing in 300-Series SS

66000 POWER-SEAL
5/16" 316 Stainless Steel Hex Screw
1/2" Band in 316 Stainless Steel
Two-Piece Housing in 316 Stainless Steel



PowerSeal® Clamps

General-purpose industrial clamps. High strength interlocked construction. PowerSeal® hose clamps exceed all SAE requirements. Use for all standard applications. Manufactured with a 1/2" stainless steel band and a plated hex screw.

PowerSeal® Clamps

Stock No.	Hex Screw	Diameter Range		Master Carton Quantity
		Minimum	Maximum	
62006	Plated	7/16"	25/32"	200
62008	Plated	1/2"	29/32"	200
62010	Plated	9/16"	1-1/16"	500
62012	Plated	11/16"	1-1/4"	500
62016	Plated	13/16"	1-1/2"	500
62020	Plated	13/16"	1-3/4"	500
62024	Plated	1-1/16"	2"	500
62028	Plated	1-5/16"	2-1/4"	500
62032	Plated	1-9/16"	2-1/2"	500
62036	Plated	1-13/16"	2-3/4"	500
62040	Plated	2-1/16"	3"	200
62044	Plated	2-5/16"	3-1/4"	200
62048	Plated	2-9/16"	3-1/2"	200
62052	Plated	2-13/16"	3-3/4"	200
62056	Plated	3-1/16"	4"	300
62060	Plated	3-5/16"	4-1/4"	200
62064	Plated	3-9/16"	4-1/2"	200
62072	Plated	1-7/8"	5"	100
62080	Plated	2-1/2"	5-1/2"	100
62104	Plated	4-1/8"	7"	200

Miniature Clamps

A lightweight streamlined clamp generally used in small diameter applications such as air, fuel and water lines. The streamlined configuration allows for installation in tight fitting or difficult to reach areas. This clamp creates high sealing pressure with only 10" to 15"/lbs. of torque. Manufactured with a 5/16" stainless steel band and a plated hex screw or Marine grade stainless steel hex screw.

Miniature Clamps

Stock No.	Hex Screw	Diameter Range		Master Carton Quantity
		Minimum	Maximum	
3504	Plated	7/32"	5/8"	500
3506	Plated	7/16"	25/32"	500
3510	Plated	9/16"	1-1/16"	200
3704	Marine SS	7/32"	5/8"	500
3706	Marine SS	1/16"	25/32"	500
3708	Marine SS	1/2"	29/32"	1000
3710	Marine SS	9/16"	1-1/16"	200



Marine Grade Clamps (All Stainless Steel)

The clamps are made from stainless steel so they deliver up to twice the clamping strength of standard clamps, and eliminates any concern of corrosion.



6300 SERIES OFFERS 300 SS HEX SCREW

Marine Grade High Corrosion Resisting Clamps				
Stock No.	Hex Screw	Diameter Range		Master Carton Quantity
		Minimum	Maximum	
63006	Stainless	7/16"	25/32"	200
63008	Stainless	1/2"	29.32"	200
63010	Stainless	9/16"	1-1/16"	500
63012	Stainless	11/16"	1-1/4"	500
63016	Stainless	13/16"	1-1/2"	500
63020	Stainless	13/16"	1-3/4"	500
63024	Stainless	1-1/16"	2"	500
63028	Stainless	1-5/16"	2-1/4"	500
63032	Stainless	1-9/16"	2-1/2"	500
63036	Stainless	1-13/16"	2-3/4"	500
63040	Stainless	2-1/16"	3"	200
63044	Stainless	2-5/16"	3-1/4"	200
63048	Stainless	2-9/16"	3-1/2"	200
63052	Stainless	2-13/16"	3-3/4"	200
63064	Stainless	3-9/16"	4-1/2"	200
63072	Stainless	1-7/8"	5"	100
63088	Stainless	3-1/8"	6"	100
63104	Stainless	4-1/8"	7"	100

ALSO AVAILABLE IN 6400 SERIES THAT OFFERS 410SS HEX SCREW.

Aero Seal® Clamps (Industrial/Aircraft)

A heavy-duty four-piece QUADRA-LOCK construction that enables far more tightening torque to be delivered to the band perforations. Use for aircraft and heavy-duty industrial applications. Manufactured with a 9/16" stainless steel band and hex screw.

Aero Seal® Industrial/Aircraft Clamps				
Stock No.	Hex Screw	Diameter Range		Master Carton Quantity
		Minimum	Maximum	
20010	Stainless	9/16"	1-1/16"	500
20016	Stainless	13/16"	1-1/2"	200

LaVanture Hose Clamps are made of durable stainless steel, so the connections are secure. The stainless steel, construction will deliver up to twice the clamping strength of standard clamps and eliminate concerns about corrosion as well.

- Excellent for auto, marine, and industrial applications.
- Made in USA.
- Call for Pricing and Additional Sizes.



STAINLESS HOSE CLAMPS

LaVanture is your best source for quality stainless hose clamps. We can help select the best clamp for your applications.

Don't See the Clamp You Need?? Call Us, We Can Probably Supply It!!

www.lavanture.com | 800.348.7625 | sales@lavanture.com



T-Bolt Clamps

T-Bolt clamps provide comprehensive application coverage and are performance engineered for long term durability and manufactured to the highest quality standards. This high strength clamp is designed for industrial, marine and vehicle applications with a stainless steel 3/4" band width, "floating" bridge liner and plated bolt with nylon insert locknut.



T-Bolt Applications:

- Turbo
- Marine Exhaust
- Diesel Exhaust
- Air Brakes
- Diaphragm Bodies
- Flanged Tanks
- Pumps Dairy Industry
- Canisters Lab Equipment
- Bleed Air Systems
- Filter Bags
- Sanitary Systems

T-Bolt Clamps

Stock No.	Hex Screw	Minimum	Maximum	Carton Qty.
TB125	Plated	1.25"	1.39"	50
TB138	Plated	1.38"	1.52"	50
TB150	Plated	1.50"	1.64"	50
TB163	Plated	1.63"	1.88"	50
TB175	Plated	1.75"	2.00"	50
TB188	Plated	1.88"	2.19"	50
TB200	Plated	2.00"	2.31"	50
TB213	Plated	2.13"	2.44"	50
TB225	Plated	2.25"	2.56"	50
TB238	Plated	2.38"	2.69"	50
TB250	Plated	2.50"	2.81"	50
TB263	Plated	2.63"	2.94"	50
TB275	Plated	2.75"	3.06"	50
TB288	Plated	2.88"	3.19"	50
TB300	Plated	3.00"	3.31"	50
TB306	Plated	3.06"	3.38"	50
TB313	Plated	3.13"	3.44"	50
TB325	Plated	3.25"	3.56"	50
TB338	Plated	3.38"	3.69"	50
TB350	Plated	3.50"	3.81"	50
TB356	Plated	3.56"	3.88"	50
TB363	Plated	3.63"	3.94"	50
TB375	Plated	3.75"	4.06"	50
TB400	Plated	4.00"	4.31"	50
TB406	Plated	4.06"	4.38"	50
TB413	Plated	4.13"	4.44"	50
TB425	Plated	4.25"	4.56"	50
TB450	Plated	4.50"	4.81"	50
TB456	Plated	4.56"	4.88"	50
TB475	Plated	4.75"	5.06"	50
TB500	Plated	5.00"	5.31"	10
TB525	Plated	5.25"	5.56"	10
TB550	Plated	5.50"	5.81"	10
TB575	Plated	5.75"	6.06"	10
TB600	Plated	6.00"	6.31"	10
TB625	Plated	6.25"	6.56"	10
TB650	Plated	6.50"	6.81"	10
TB675	Plated	6.75"	7.06"	10
TB700	Plated	7.00"	7.31"	10
TB725	Plated	7.25"	7.56"	10
TB750	Plated	7.50"	7.81"	10
TB775	Plated	7.75"	8.06"	10
TB800	Plated	8.00"	8.31"	10
TB825	Plated	8.25"	8.56"	10
TB850	Plated	8.50"	8.81"	10

Custom O.E.M. Sizes Available. Call for Information

www.lavanture.com | 800.348.7625 | sales@lavanture.com

Constant-Torque® Clamps

Constant-Torque® Clamps				
Stock No.	Hex Screw	Minimum Dia	Maximum Dia	Carton Qty.
CT9410	Stainless	9/16"	1-1/16"	200 pcs.
CT9412	Stainless	11/16"	1-1/4"	200 pcs.
CT9416	Stainless	13/16"	1-1/2"	200 pcs.
CT9420	Stainless	13/16"	1-3/4"	200 pcs.
CT9424	Stainless	1-1/16"	2.00"	200 pcs.
CT9428	Stainless	1-5/16"	2-1/4"	100 pcs.
CT9432	Stainless	1-9/16"	2-1/2"	100 pcs.
CT9436	Stainless	1-13/16"	2-3/4"	100 pcs.
CT9440	Stainless	2-1/16"	3.00"	100 pcs.
CT9444	Stainless	2-5/16"	3-1/4"	100 pcs.
CT9448	Stainless	2-9/16"	3-1/2"	100 pcs.
CT9452	Stainless	2-13/16"	3-3/4"	100 pcs.
CT200L	Stainless	1-14"	2-1/8"	100 pcs.

The Constant-Torque® clamp is a breakthrough in clamping technology. A belleville spring mechanism permits the clamp to automatically increase or decrease its own diameter due to changes in operational or environmental temperatures. This unique design eliminates "cold flow" leaks, protects hoses from damage and helps to maintain consistent sealing pressure.

Liner Clamps

Constant-Torque® Clamps				
Stock No.	Hex Screw	Minimum Dia	Maximum Dia	Carton Qty.
9206H	Plated	7/16"	25/32"	100 pcs.
9208H	Plated	1/2"	29/32"	100 pcs.
9210H	Plated	9/19"	1-1/16"	100 pcs.
9212H	Plated	11/16"	1-1/4"	100 pcs.
9216H	Plated	13/16"	1-1/2"	100 pcs.
9220H	Plated	13/16"	1-3/4"	100 pcs.
9224H	Plated	1-1/16"	2.00"	100 pcs.
9228H	Plated	1-5/16"	2-1/4"	100 pcs.
9232H	Plated	1-9/16"	2-1/2"	100 pcs.
9236H	Plated	1-13/16"	2-3/4"	100 pcs.
9240H	Plated	2-1/16"	3.00"	100 pcs.
9244H	Plated	2-5/16"	3-1/4"	100 pcs.
9248H	Plated	2-9/16"	3-1/2"	100 pcs.
9252H	Plated	2-13/16"	3-3/4"	100 pcs.
9256H	Plated	3-1/16"	4.00"	100 pcs.
9260H	Plated	3-5/16"	4-1/4"	100 pcs.
9264H	Plated	3-9/16"	4-1/2"	100 pcs.
9272H	Plated	4-1/8"	5.00"	100 pcs.
9280H	Plated	4-5/8"	5-1/2"	100 pcs.
9288H	Plated	5-1/8"	6.00"	100 pcs.
9296H	Plated	5-5/8"	6-1/2"	100 pcs.
92104H	Plated	6-1/8"	7.00"	100 pcs.



Liner Clamps are integral extensions of the band as an inner liner protects soft-surface hose (silicone and others) from damage caused by extrusion or shearing through the band slots. Liner clamps afford maximum protection to soft hoses while providing a true concentric seal.

CONSTANT TORQUE AND LINER CLAMPS

T.E.W. Primary Wire Series WP

U.L. style no. 1015 copper stranded, single conductor, thermoplastic insulated primary wire is available in 11 standard colors on plastic spools, wooden reels and bulk barrels*.

- Meets or exceeds all Coast Guard and RVIA standards
- UL and CSA listed appliance wire
- Stocked in 7 colors
- Smooth surface for easy pull through in conduit

8 Gauge Wire Available
Call for Information

Specifications :

Size	Conductor
10 Gauge	105/30
12 Gauge	65/30
14 Gauge	41/30
16 Gauge	26/30

* Bulk Barrels Available :

10 gauge	10,000'
12 gauge	15,000'
14 gauge	25,000'
16 gauge	30,000'
18 gauge	35,000'

Call for Part Numbers
and Pricing

Additional colors, custom
colors and striping also
available.
Call for information.

Primary Wiring

T.E.W. Primary Wire - Black, White, Red

Black Stock No.	White Stock #	Red Stock #	Gauge	Spool
WP10BK-5	WP10WH-5	WP10RD-5	10 ga.	500'
WP10BK-10	WP10WH-10	WP10RD-10	10 ga.	1000'
WP10BK-20	WP10WH-20	WP10RD-20	10 ga.	2000'
WP12BK-5	WP12WH-5	WP12RD-5	12 ga.	500'
WP12BK-10	WP12WH-10	WP12RD-10	12 ga.	1000'
WP12BK-30	WP12WH-30	WP12RD-30	12 ga.	3000'
WP14BK-5	WP14WH-5	WP14RD-5	14 ga.	500'
WP14BK-10	WP14WH-10	WP14RD-10	14 ga.	1000'
WP14BK-50	WP14WH-50	WP14RD-50	14 ga.	5000'
WP16BK-5	WP16WH-5	WP16RD-5	16 ga.	500'
WP16BK-10	WP16WH-10	WP16RD-10	16 ga.	1000'
WP16BK-50	WP16WH-50	WP16RD-50	16 ga.	5000'

8 Gauge Wire Available Call for information

T.E.W. Primary Wire - Blue, Green, Yellow, Brown

Blue Stock No.	Green Stock #	Yellow Stock #	Brown Stock #	Gauge	Spool
WP10BU-5	WP10GN-5	WP10YE-5	WP10BN-5	10 ga.	500'
WP10BU-10	WP10GN-10	WP10YE-10	WP10BN-10	10 ga.	1000'
WP10BU-20	WP10GN-20	WP10YE-20	WP10BN-20	10 ga.	2000'
WP12BU-5	WP12GN-5	WP12YE-5	WP12BN-5	12 ga.	500'
WP12BU-10	WP12GN-10	WP12YE-10	WP12BN-10	12 ga.	1000'
WP12BU-30	WP12GN-30	WP12YE-30	WP12BN-30	12 ga.	3000'
WP14BU-5	WP14GN-5	WP14YE-5	WP14BN-5	14 ga.	500'
WP14BU-10	WP14GN-10	WP14YE-10	WP14BN-10	14 ga.	1000'
WP14BU-50	WP14GN-50	WP14YE-50	WP14BN-50	14 ga.	5000'
WP16BU-5	WP16GN-5	WP16YE-5	WP16BN-5	16 ga.	500'
WP16BU-10	WP16GN-10	WP16YE-10	WP16BN-10	16 ga.	1000'
WP16BU-50	WP16GN-50	WP16YE-50	WP16BN-50	16 ga.	5000'

Additional colors, custom colors and striping also available. Call for information

T.E.W. Primary Wire - Orange, Purple, Gray, Pink

Orange Stock No.	Purple Stock #	Gray Stock #	Pink Stock #	Gauge	Spool
WP10OR-5	WP10PU-5	WP10GY-5	WP10PK-5	10 ga.	500'
WP10OR-10	WP10PU-10	WP10GY-10	WP10PK-10	10 ga.	1000'
WP10OR-20	WP10PU-20	WP10GY-20	WP10PK-20	10 ga.	2000'
WP12OR-5	WP12PU-5	WP12GY-5	WP12PK-5	12 ga.	500'
WP12OR-10	WP12PU-10	WP12GY-10	WP12PK-10	12 ga.	1000'
WP12OR-30	WP12PU-30	WP12GY-30	WP12PK-30	12 ga.	3000'
WP14OR-5	WP14PU-5	WP14GY-5	WP14PK-5	14 ga.	500'
WP14OR-10	WP14PU-10	WP14GY-10	WP14PK-10	14 ga.	1000'
WP14OR-50	WP14PU-50	WP14GY-50	WP14PK-50	14 ga.	5000'
WP16OR-5	WP16PU-5	WP16GY-5	WP16PK-5	16 ga.	500'
WP16OR-10	WP16PU-10	WP16GY-10	WP16PK-10	16 ga.	1000'
WP16OR-50	WP16PU-50	WP16GY-50	WP16PK-50	16 ga.	5000'

Orange, Purple, Gray & Pink are special order.

Additional colors, custom colors and striping also available. Call for information

Jacket Color - Black		
Stock No.	Conductor	Spool
WTC144	14-4	2500'
WTC144-1	14-4	100'
WTC144-5	14-4	500'
WTC146	14-6	2000'
WTC146-1	14-6	100'
WTC146-5	14-6	500'
WTC147	14-7	2000'
WTC147-1	14-7	100'
WTC147-5	14-7	500'
WTC147M	Multi 7	1500'
WTC147M-1	Multi 7	100'
WTC147M-5	Multi 7	500'
Multi-Gauge & Colors		
2-10 gauge white, black; 1-12 gauge blue		
4-14 gauge red, green, brown, yellow		

Color Code:
 4 Conductor: Yellow, Red, Green, Brown
 6 Conductor: Yellow, Red, Green, Brown, Blue, Black
 7 Conductor: Yellow, Red, Green, Brown, Blue, Black, White

Bonded Ribbon Trailer Cable

Brown, White, Yellow, Green		
Stock No.	Conductor	Spool
WB164BWYG	4-16 ga.	100'
WB164BWYG-5	4-16 ga.	500'
WB164BWYG-10	4-16 ga.	1000'

Trailer Brake Wire

Jacket Color - Red		
Stock No.	Conductor	Spool
WRB122	12-2 ga	1500'
WRB122-1	12-2 ga.	100'
WRB122-5	12-2 ga.	500'
WRB142	14-2 ga.	2500'
WRB142-1	14-2 ga.	100'
WRB142-5	14-2 ga.	500'

HDMI

Our HDMI cables have a type A gold plated connector with strand tinned copper insulated in PE foam and wrapped in an aluminum PE and tinned copper braid. Al-MG. ROHS and UL compliant.

HDMI Cables		
Stock No.	Description	CT. QTY
LHDMI-3	3' HDMI HS 1.4V Cable	250pcs
LHDMI-6	6' HDMI HS 1.4V Cable	150 pcs
LHDMI-12	12' HDMI HS 1.4V Cable	80 pcs
LHDMI-15	15' HDMI HS 1.4V Cable	50 pcs
LHDMI-20	20' HDMI HS 1.4V Cable	30 pcs

Trailer Cable Series WTC
 Black jacketed cable with single conductor stranded copper wire color coded for easy identification. A tough, but flexible cable with excellent resistance to abrasion, oil, grease, acid, and weather.

Trailer Brake Wire Series WRB
 Electric brake wire with 2 conductors (white, black) in a red thermoplastic jacket. Non-Listed.

Speaker Wire Series WSI
 18 Gauge clear PVC jacketed stranded speaker wire for clear sound reproduction and optimal audio output. One tinned copper wire and one bare copper wire for easy identification and installation.

Other Wire Products Also Available
 Ripcord
 • Ground Strap
 • Parallel Booster Cable
 • Parallel Wire
 • Cross Link Wire
 • Marine Wire
 • Power Cord
 Call for Availability

ELECTRICAL WIRING

LaVanture Products is a national distributor of Pollak engineered products.

To the heavy duty truck operator or the weekend camper Pollak has always symbolized quality.

Heavy Duty Single Pole Connector Socket/Plug

Has a continuous duty capacity of 300 amps, and is ideal for almost all heavy-duty applications.

11933

Rectangular-to-Round Harness Adaptor

Fits OEM Harnesses.

Series 11400 4 Way Connectors

Are 12 to 24 Volts/20 Amp polarized, chrome die cast ABS plastic and high impact green insulators w/ split brass contacts.

Series 11600 6 Way Connectors

Feature high impact interiors of super strength keyed for proper assembly. Brass terminal pins for best conductivity, terminals accept up to #12 gauge wires and plated steel cable guard prevents cable chafing.

Series 1200 7 Way Connectors

Are available in high impact ABS black plastic or heavy duty metal.

POLLAK EZ Trailer Adapters

Are designed to eliminate makeshift jumpers allowing for one vehicle to tow trailers with or without electric brakes.



Pollak

12V POLLAK 4 and 6 Way Connectors

Specifications

Stock No.	Description	Carton Quantity
11408	4-Way Complete Chrome	100
11409	4-Way Trailer End Only	175
11410	4-Way Car End Only	125
11603	6-Way Complete Chrome	75
11604	6-Way Trailer End Only	100
11609	6-Way Car End Only	50
11617	Bracket Only for 11408 & 11603	80

12V POLLAK 7-Way Connectors

Specifications

Stock No.	Description	Carton Quantity
11720	Heavy Duty 7 Way Vehicle End	36
12705	7-Way Complete Plastic	50
12706	7-Way Trailer End Only	100
12707	7-Way Car End Only	100
12701	Bracket Only for 12705	90
12704	7-Way Complete Metal w/Bracket	50
12700	7-Way Complete Metal w/o Bracket	40
12702	7-Way Metal Trailer End Only	100
12703	7-Way Metal Car End Only	80

POLLAK Heavy Duty 12V Connectors & Adapters

Specifications

Stock No.	Description	Carton Quantity
12716	7 Way to 4 Way RV Adapter	100
12717	6 Round to 4 Way Flat Adapter	4
12718	7 Way Blade to 5 Way Flat	100
12719	7 RV Blade to 6 Round Adapter Center Blade Pin	10
12729	7 RV Blade to 6 Round Center Aux	100

WISHBONE Trailer Harness

All Wiring is 18 Gauge		
Stock No.	Description	Carton Quantity
WB-25	4 Way Flat 25' w/ 32 Inch Ground	40
WB-35	4 Way Flat 35 Foot w/ 32 Inch Ground	40
WB5-35	5 Way Flat Marine Harness 35' w/ 48" Ground & Brake	35

Molded Loop Connectors		
Stock No.	Description	Carton Quantity
212-25	4 Way Flat 25' w/ 32 Inch Ground	100
212-24	2-Way Connector 16 GA wire (24")	200
312-36	3-Way Connector 16 GA Wire (36")	250
412	4-Way Connector 16 GA Wire (12")	450
412-24	4-Way Connector 16 GA Wire (24")	250
412-48	4-Way Connector 16 GA Wire (48")	250
412-M	4-Way Connector 16 GA Wire Male End Only (12")	250

7-WAY CONNECTORS w/Cord

Cold Weather Cords		
Stock No.	Description	Carton Quantity
LPC7WY-6	7-Way Connector w/6' CORD	27
LPC7WY-8	7-Way Connector w/8' CORD	20
LPC7WY-9	7-Way Connector w/9' CORD	18
LPC7WY-11	7-Way Connector w/11' CORD	14
LPC7WY-12	7-Way Connector w/12' CORD	25
LPC7WY-14	7-Way Connector w/14' CORD	11
LPC7WY-15	7-Way Connector w/15' CORD	10
LPC7WY-20	7-Way Connector w/20' CORD	13
LPC7WY40-12	7-Way CSA 40* Connector w/12' CORD	23
LPC&WY16-8	#120 7-Way Connector 16Ga Wire W/8' Cord	?

Wiring is Multi-Guage		
MP7WY-4	7 Way Connector w/ 4 Foot Cord	25
MP7WY-8	7 Way Connector w/ 8 Foot Cord	20
MP7WY-11	7 Way Connector w/ 11 Foot Cord	20
LPC7WY-11	7-Way Connector w/11' CORD	14
LPC7WY-12	7-Way Connector w/12' CORD	25
LPC7WY-14	7-Way Connector w/14' CORD	11
LPC7WY-15	7-Way Connector w/15' CORD	10
LPC7WY-20	7-Way Connector w/20' CORD	13
LPC7WY40-12	7-Way CSA 40* Connector w/12' CORD	23
LPC&WY16-8	#120 7-Way Connector 16Ga Wire W/8' Cord	?

Multi-Guage & Colors		
10 Gauge black, white 12 Gauge blue 14 Gauge brown, red, yellow, green		

Wishbone Trailer Harnesses

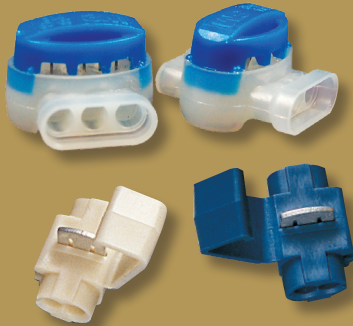
Designed with "wish-bone" wiring to allow-ing for installation down both sides of trailer with same harness. All wire is 18 gauge and color coded for easy tracking. WB5-35 is designed for use with marine trailers.

7 Way RV/Trailer Connector

Pre assembled with a 7 way trailer connector, available in 4, 8 and 11 foot lengths with black jacketed 18 gauge color coded wire.

LaVanture also offers a cold weather 7-way. Our custom siliconized jacket will supply power in the coldest climates. -55°C/ 105°C 600V

ADAPTERS, CONNECTORS, ETC.



LaVanture Products stocks and distributes a full line of wire management and electrical products designed to meet the challenging applications of today's markets. These quality products are manufactured by companies including 3M, Drossbach, Canusa, Breeze and other industry leading manufacturers.



3M® Scotch-Lok Connectors

Make quick reliable insulated splices without stripping, twisting or soldering using only channel-lok pliers.

5,000 Master Carton		
Stock No.	Description	Quantity
WCL6164	3M 16-14, 560 Blue	500 pc. Bag.
WCL6184	3M 18-14, 564 White	500 pc. Bag
WCL6314	3M 314 Self Stripping Pigtail	1000 pc. Ctn.
Minimum Order Bag/Carton Required		

WCL6314 contains a special lubricant to protect from corrosion in damp conditions.

Ring Tongue and Fork Terminals

Terminals are for easy attachment at end of wire and form a positive connection. Ring Terminals are designed to prevent accidental removal. Fork Terminals can be attached without fully removing the fastener.

Ring Terminals Insulated		Fork Terminals Insulated		
Stock No.	Description	Stock #	Description	Carton Quantity
WCR204	12-10, Yellow 1/4"	WCFT02	12-10, Yellow #10	1000
WCR206	12-10, Yellow 5/16"	WCFT26	16-12, Red #10	1000
WCR284	22-16, Red 1/4"	WCFT266	16-12, Red #6	1000
WCR288	22-18, Red #10	WCFT64	16-14, Blue #10	1000
WCR644	16-14, Blue 1/4"	WCFT646	16-14, Blue #6	1000
WCR648	16-14, Blue #10			1000

Butt Splices

Designed for splicing wire during a continuous run. Heat Shrink Butt splices are designed to be self-sealing with heat application. Best used where moisture and corrosion are a problem.

Butt Splices Insulated		Heat Shrink Splices	
Stock No.	Description	Stock #	Discription
WCB20	12-10 Yellow	WCB20HSY	12-10 Yellow
WCB28	22-18 Red	WCB28HSR	22-18 Red
WCB64	16-14, Blue	WCB64HSB	16-14, Blue
Carton Quantity on all Butt Splices 1000 pcs.			

Wire Connectors		
Stock No.	Description	Carton Quantity
WCS-BU	Standard Blue	1000 pcs.
WCS-GY	Standard Gray	1000 pcs.
WCS-OR	Standard Orange	1000 pcs.
WCS-RD	Standard Red	1000 pcs.
WCS-YW	Standard Yellow	1000 pcs.
WCWN-BU	Winged Blue	1000 pcs.
WCWN-GY	Winged Gray	1000 pcs.
WCWN-RD	Winged Red	1000 pcs.
WCWN-TN	Winged Tan	1000 pcs.
WWN-YW	Winged Yellow	1000 pcs.
Carton Quantity 1000 pcs. Minimum Order 100 pcs.		

Wire Connectors

WC series wire connectors are made from UL-94-2 flame retardant material and color coded to industry standards. The winged connectors act as a built in wire wrench for easy application.



ADAPTERS, CONNECTORS, ETC.



WE HAVE THE POWER

POWER CORDS: Our power cords are CSA certified, have 'Reverse Polarity' indicators, are available in 30 amp or 50 amp, and come in a variety of lengths.

INLETS: Our inlets are CSA certified and are available in 30 amp or 50 amp, with or without 'Reverse Polarity' indicators.

Power Cords

Stock #	Description	Quantity
RPCDL3025	Reverse Polarity Powercor Detached LED 30 amp 25ft	4
RPCDL5036	Reverse Polarity Powercor Detached LED 50 amp 36ft	2
RPCDL5050	Reverse Polarity Powercor Detached LED 50 amp 50ft	1

Inlets

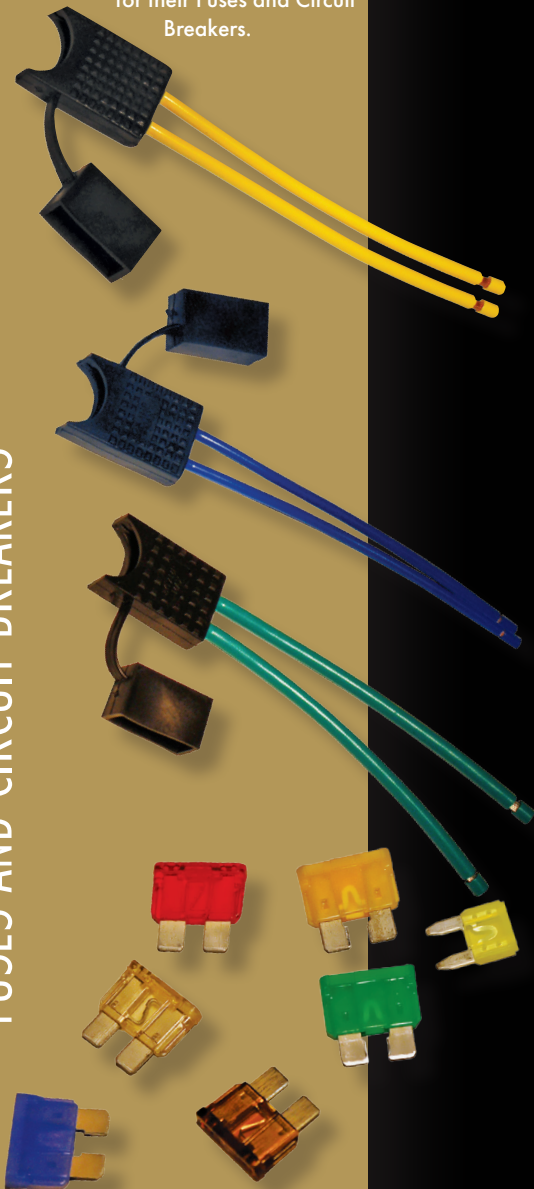
Stock #	Description	Quantity
LI30B	Inlet 30 amp Black LED	25
LI308B-NL	Inlet 30 amp Black NO LED	25
LI50B	Inlet 50 amp Black LED	25
LI50-NL	Inlet 50 amp Black NO LED	25

ADAPTERS, CONNECTORS, ETC.



Cooper Bussmann brand is the industry standard for circuit protection. LaVanture Products is proud to be a national distributor for their Fuses and Circuit Breakers.

FUSES AND CIRCUIT BREAKERS



Fuse Holders (Blade-Type) are colored coded ATC holders with 6 inches of T.E.W., CSA and UL approved wire. The series GMF fuse holders are available with and without fuses.

Fuse Holders (Blade-Type)						
Stock No. w/o Fuse	Carton Quantity	Stock# w/Fuse	Carton Quantity	Amp.	Gauge	Color
GMFH807	100	GMFH807A	25	7.5 amp.	16 ga.	Red
GMFH810	100	GMFH810A	25	30 amp.	10 ga.	Green
GMFH812	100	GMFH812A	25	20 amp.	12 ga.	Yellow
GMFH814	100	GMFH814A	25	15 amp.	14 ga.	Blue
GMFH816	100	GMFH816A	25	10 amp.	16 ga.	Red
GMFH818	100	GMFH818A	25	5 amp.	18 ga.	Orange

Bulk Fuses (Blade-Type)			
Stock No.	Description	Color	Carton Quantity
GM1	1-Amp Blade Fuse	Black	2000
GM3	3- Amp Blade Fuse	Purple	2000
GM5	5- Amp Blade Fuse	Orange	2000
GM7	7.5- Amp Blade Fuse	Burgundy	2000
GM10	10- Amp Blade Fuse	Red	2000
GM15	15- Amp Blade Fuse	Blue	2000
GM20	20-Amp Blade Fuse	Yellow	2000
GM25	25- Amp Blade Fuse	Clear	2000
GM30	30- Amp Blade Fuse	Green	2000

Mini Bulk Fuses (Blade-Type)			
Stock No.	Description	Color	Carton Quantity
GM5M	5-Amp Mini Blade Fuse	Orange	500
GM7M	7.5-Amp Mimi Blade Fuse	Burgundy	500
GM10M	10-Amp Mimi Blade Fuse	Red	500
GM15M	15-Amp Mimi Blade Fuse	Blue	500
GM20M	20-Amp Mimi Blade Fuse	Yellow	500
GM25M	25-Amp Mimi Blade Fuse	Clear	500
GM30M	30-Amp Mimi Blade Fuse	Green	500

Circuit Breakers:
These circuit breakers are used in a variety heavy-duty truck and automotive applications. Use ring terminals to connect breaker into circuit these stud-type circuit breakers feature a patented.



Smoke and Gas Detectors

First Alert BRK battery smoke alarms are designed to be easy to install, easy to maintain, and quality-engineered for years of virtually maintenance-free service. Models are available with 9 volt battery power and hard wire installations. All models are UL listed and feature a 10 year manufacturer limited warranty.

First Alert BRKSCO5MRVA combination smoke/carbon monoxide alarms are designed to be easy to install, easy to maintain, and quality-engineered for years of virtually maintenance-free service. It features easy alarm identification through different horn sounds and lights, single button test/silence with photoelectric smoke and electrochemical CO sensors.



Kidde RC914 are battery operated smoke alarms that utilize ionization sensing technology.. This easy to install unit includes a test button to verify the detection electronics are working properly. RC914 is UL listed with a 3 year manufacturer warranty.

Detectors		
Stock No.	Description	Carton Quantity
BRKSCO5MRVA	Carbon Monoxide/Smoker detector UL/CSA Battery	48
BRKCO400MRVA	Carbon Monoxide Detector UL/CSA Battery	48
BRK250RV-48B	Ion Smoke Detector UL/RV	6
BRK250RVA-48B	Ion Smoke Detector RV UL Battery	6
RC914	Smoke Detector	40



BRK250RV-48B



BRKSCO5MRVA



RC914

SMOKE AND GAS DETECTORS



Fire Extinguishers

LaVanture Products stocks and distributes high quality safety products from leading manufacturers. All these products meet our quality standards and have passed a rigid testing program.



RC210 series is a rechargeable fire extinguisher that are full-featured multipurpose line unit. They feature chrome plated brass valves and a 6 year manufacturer warranty. They are UL Listed/Classified and meet or exceed NFPA home and workplace requirements. **RC100D** is shipped w/o bracket and **RC210** shipped with bracket.

RC10 series rechargeable multi-purpose single use fire extinguishers are constructed with an aluminum cylinder and nylon valve assembly. Features include a pressure gauge for immediate status check, 10 year manufacturer warranty and UL listing.

RC1A10 series multi purpose dry chemical single use fire extinguishers are constructed with an aluminum cylinder and nylon valve assembly including a pressure gauge for immediate status check, 6 year manufacturer warranty, UL and D.O.T. approved. **RC10BC** 6 Year UL, Coast Guard approved.



BRKBF5 fire extinguishers with a sodium bicarbonate extinguishing agent feature an easy-to-use pin pressure indicator and a 5 year manufacturer limited warranty. They are bulk packed making them perfect for production line applications. **BRKFE5R** is Coast Guard Approved, UL/CSA, and has 10Year manufacturer warranty.

BRKFE1A10GA is a non-rechargeable multi-purpose fire extinguisher with a monoammonium phosphate extinguishing agent for general home use. Feature a SureGrip valve and trigger, bracket and strap for easy mounting and a 10 year manufacturer warranty. It is U.S. Coast Guard approved for marine applications. UL/CSA

BRKFE5R-PWCNA is rechargeable marine fire extinguisher with a sodium bicarbonate extinguishing agent for use in boats and RV's. featuring a commercial-grade metal valve and trigger, easy-to-read pressure gauge, 10 year manufacturer warranty and is shipped with a bracket and strap. It is U.S. Coast Guard approved for marine use.

www.lavanture.com | 800.348.7625 | sales@lavanture.com

Fire Extinguishers		
Stock No.	Description	Carton Quantity
BRKFE5R	2# Marine Fire Extinguisher UL/CSA 5 BC White	6
RC210DB	1.5# Fire Extinguisher with Bracket UL/FA 5 BC Red	6
RC210DC	Fire Extinguisher with Bracket CSA Elite Red	6
BRKFE1A10GOA	Fire Extinguisher with Bracket UL/CSA 1-A BC Red	6
RC10BC	"Fire Away" Extinguisher with Bracket 10 BC	6
RC10C	"Fire Away" Extinguisher with Bracket CSA 10 BC	6
RC1A10	Fire Extinguisher with Bracket UL 10 BC	6
RC2A10AA	Fire Extinguisher with Bracket (466400) 3-A 40-BC	4
BRKFE3A40GR	Fire Extinguisher with Metal Bracket, HD Gauge 3-A 40-BC	2
BRKFE1A10GOWA	Fire Extinguisher with Bracket U:/CSA 1-A 10B C White	6



Brackets		
Stock No.	Description	Carton Quantity
RC440161	Fire Extinguisher Bracket CSA/USCG for 5#/3#	6
BRKFEBRA5-6	Fire Extinguisher Metal Bracket CSA/USCG for 5#	2
BRKB707800	Fire Extinguisher Plastic Bracket for BF5 Extinguisher	50
RC366242	Fire Extinguisher Bracket for 10# Extinguisher	1

Highway Safety Warning Triangles

Kit of three triangles in high-density plastic case.

- Meets or exceeds all applicable DOT standard FMVSS 125 and all state and legal requirements.
- Set-up requires no tools.
- Precision reflex tooling provides reflectors with high candle power beam for night use.
- Fluorescent inner triangle warns daytime traffic.
- Self-contained unit needs no power source.
- No skid rubber feet keep the triangle in place in high wind.
- Placement instructions permanently printed on case and triangle.

Mounting Bracket:

Steel bracket, Zinc plated, 12 gauge with 14 gauge strap.



Highway Safety Triangle Kits		
Stock No.	Description	Carton Qty
1005	Deluxe Kit with 3 Triangles 18-3/4" L x 5" W	6 sets
1005B-1	Deluxe Zinc Plated Bracket 18-1/2" L x 1.25" W	2 pc.
LERT10	Kit with 3 Triangles 18-1/4" L x 4-1/2" W	4 sets
LETB8891005	Bracket 18-3/4" L x 5" W	1 pc.

Class	Description
Class A	solid materials such as wood or paper, fabric, and some plastics
Class B	liquids or gas such as alcohol, ether, gasoline, or grease
Class C	electrical failure from appliances, electronic equipment, and wiring
Class D	metallic substances such as sodium, titanium, zirconium, or magnesium
Class K	grease or oil fires specifically from cooking



FIRE EXTINGUISHERS AND SAFETY TRIANGLES



Fireplaces

One thing we can all agree on, there can never be too much space in an RV!

With our latest design offering you will get all the functions of our traditional fireplaces in a new slim modern look. Most importantly it is space saving to allow more room for other features.



GAIN ALMOST 2 ADDITIONAL FEET OF USABLE SPACE.

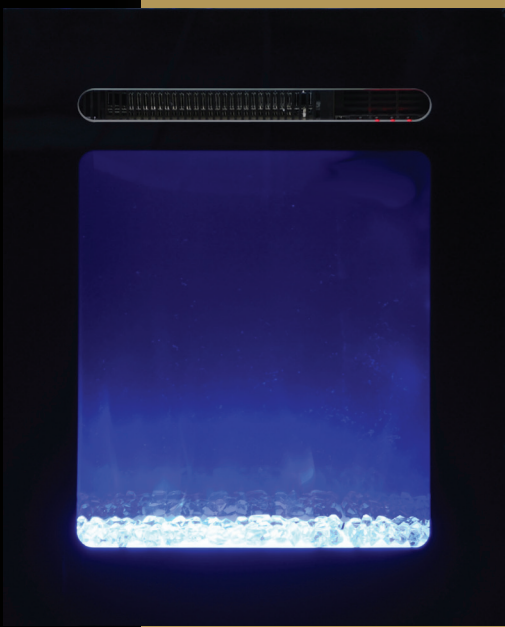


FIREPLACE FEATURES

- Power: 5100 BTU, 120V, 60HZ
- Heat setting in Celsius or Fahrenheit
- Flush wall mount electric fireplace
- Front tempered glass
- Crushed glass or faux log look*
- Private Frequency (No interference with other small appliances remotes.)
- Adjustable flame brightness control
- Remote control
- Over heat shut-off device
- High quality quiet fan
- Three LED color flame effect red/blue/orange
- LED temperature display
- Digital temperature adjustment
- 8 hour timer
- CSA Approved

Stock No.	Cutout Dimensions	Outer Dimension
LFP18	15.75" x 6.313" x 24"	18" x 6.2" x 23.625"
LFP26	22.75" x 6.313" x 17.125"	26" x 6.2" x 17.7"
LFP30	26.75" x 6.313" x 17.125"	30" x 6.2" x 17.7"
LFP36	32.75" x 6.313" x 17.125"	36" x 6.2" x 17.7"
LFP40	36.75" x 6.313" x 17.125"	40" x 6.2" x 17.7"
LFP48	44.75" x 6.313" x 17.125"	48" x 6.2" x 17.7"
LFP26-CS	22.375" x 6.625" x 9.625"	21.813" x 6.125" x 9.25"
LFP30-CS	26.375" x 6.625" x 9.625"	25.813" x 6.125" x 9.25"
LFP36-CS	32.375" x 6.625" x 9.625"	31.813" x 6.125" x 9.25"
LFP40-CS	36.375" x 6.625" x 9.625"	35.813" x 6.125" x 9.25"
LFP48-CS	44.375" x 6.625" x 9.625"	43.813" x 6.125" x 9.25"
LFP54-CS	50.375" x 6.625" x 9.625"	49.813" x 6.125" x 9.25"
LFP60-CS	56.375" x 6.625" x 9.625"	55.813" x 6.125" x 9.25"

Includes allotment for airflow.
Slim line models only available in crystals.



CRUSHED GLASS
OR FAUX LOG LOOK

LaVanture Products
inventories and distributes a wide variety of tape products from 3M Products, Shurtape, Intertape, and many other leading manufacturers. With the emphasis on quality and competitive pricing.

INDUSTRIAL TAPES



We've Got Tape!!!

from Leading Manufacturers... at Competitive Prices

Duct Tape

Series PC-460 is a general purpose 6 mil co-extruded duct tape with a waterproof backing and natural rubber adhesive.

Series PC-590 is a general purpose 6 mil co-extruded cloth duct tape with a waterproof backing and natural rubber adhesive.

C519-200 is 3M 3939 premium 9 mil duct tape designed for use in packaging, bundling, sealing, seaming, repairing and waterproofing general applications.

Duct Tape				
Stock No.	Description	Color	Size	Carton Qty.
PC460-2	6 mil General Purpose Duct Tape	Silver	2" x 60 yd.	24 rolls
PC460-3	6 mil General Purpose Duct Tape	Silver	3" x 60 yd.	16 rolls
PC590-2	7 mil General Purpose Duct Tape	Silver	2" x 60 yd.	24 rolls
PC590-2B	7 mil General Purpose Duct Tape	Black	2" x 60 yd.	16 rolls
C519-200	9 mil 3M Duct Tape 3939	Silver	2" x 60 yd.	24 rolls

Masking Tape

Series CP-106 is a general purpose masking tape with solvent-less adhesive providing an economical solution for everyday applications.

Masking Tape				
Stock No.	Description	Color	Size	Carton Qty.
CP106-75	5.2 mil Masking Tape	Beige	3/4" x 60 yd.	48 rolls
CP106-2	5.2 mil Masking Tape	Beige	2" x 60 yd.	24 rolls
CP106-3	5.2 mil Masking Tape	Beige	3" x 60 yd.	16 rolls

Color Masking Tape

Series CP632 is a lightweight general purpose masking tape, available in four colors, used for quality control marking, carton identification and other light masking tape applications

Color Masking Tape				
Stock No.	Description	Color	Size	Carton Qty.
CP632-375BLU	3/8" Masking Tape	Blue	3/8" x 60 yd.	96 rolls
CP632-375GN	3/8" Masking Tape	Green	3/8" x 60 yd.	96 rolls
CP632-375R	3/8" Masking Tape	Red	3/8" x 60 yd.	96 rolls
CP632-375YW	3/8" Masking Tape	Yellow	3/8" x 60 yd.	96 rolls

Carpet Tape

DF545-2 Premium grade double-sided carpet tape used to hold carpet and pad applications. Engineered with a versatile adhesive system that provides strength and clean removability. Blended natural and synthetic rubber provides superior adhesion to concrete, tile, hardwood, and other irregular surfaces.

Carpet Tape				
Stock No.	Description	Color	Size	Carton Qty.
DF545-2	Double Sided Carpet Tape	Black	2" x 36 yd.	24 rolls

Black Bottom Board Tape

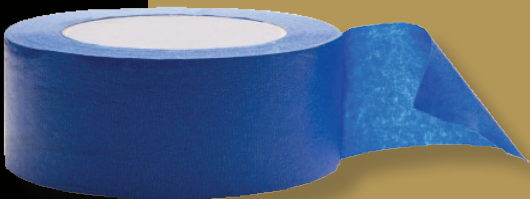
PC658-28 is a black bottom board tape used for seaming and sealing bottom board materials in pre-manufactured homes and RVs during assembly, set-up and maintenance. Used for applications where a high tensile, adhesion and thickness are desired.

Black Bottom Board Tape				
Stock No.	Description	Color	Size	Carton Qty.
PC658-2B	17 mil Black Bottom Board Tape	Black	2" x 60 yd.	24 rolls

Painter's Tape

Series CP27 Painter's tape products get the job done. Whether you need a tape that will last up to 30 days in direct sunlight or a tape designed to hold a plastic drop cloth, we've got you covered. With these tapes, you can expect a well-protected surface and sharp, clean lines.

Painter's Tape				
Stock No.	Description	Color	Size	Carton Qty.
CP27-75	Premium Painters Tape	Blue	3/4" x 60 yd.	48 rolls
CP27-10	Premium Painters Tape	Blue	1" x 60 yd.	36 rolls
CP27-15	Premium Painters Tape	Blue	1.5" x 60 yd.	24 rolls
CP27-2	Premium Painters Tape	Blue	2" x 60 yd.	24 rolls



Foil Tape

Series C519 is a premium 2 mil aluminum foil tape with a pressure sensitive adhesive and paper liner. The liner is removed for final application and the aggressive adhesive once applied provides a durable performance.

Foil Tape				
Stock No.	Description	Color	Size	Carton Qty.
C519-200F	2 mil Foil Tape	Aluminum	2" x 50 yd.	24 rolls
C519-300F	2 mil Foil Tape	Aluminum	3" x 50 yd.	16 rolls
C519-400F	2 mil Foil Tape	Aluminum	4" x 50 yd.	12 rolls
C519-600F	2 mil Foil Tape	Aluminum	6" x 50 yd.	8 rolls

Electrical Tape

3M 1700 TemFlex electrical tape is designed for heavy duty applications. "The best electrical tape on the market". Color electrical tapes are designed for use in phase identification, color coding of motor leads, piping systems and marking safety areas.

Electrical Tape				
Stock No.	Description	Color	Size	Carton Qty.
C165-75	3M 165 TemFlex Electrical Tape	Black	3/4" x 60 ft.	10 Roll sleeve/100 roll ctn.
C165-75BN	3M 165 TemFlex Electrical Tape	Brown	3/4" x 66 ft.	10 Roll sleeve/100 roll ctn.
C165-75BU	3M 165 TemFlex Electrical Tape	Blue	3/4" x 66 ft.	10 Roll sleeve/100 roll ctn.
C165-75GN	3M 165 TemFlex Electrical Tape	Green	3/4" x 66 ft.	10 Roll sleeve/100 roll ctn.
C165-75GY	3M 165 TemFlex Electrical Tape	Gray	3/4" x 66 ft.	10 Roll sleeve/100 roll ctn.
C165-75OR	3M 165 TemFlex Electrical Tape	Orange	3/4" x 66 ft.	10 Roll sleeve/100 roll ctn.
C165-75RD	3M 165 TemFlex Electrical Tape	Red	3/4" x 66 ft.	10 Roll sleeve/100 roll ctn.
C165-75WH	3M 165 TemFlex Electrical Tape	White	3/4" x 66 ft.	10 Roll sleeve/100 roll ctn.
C165-75YW	3M 165 TemFlex Electrical Tape	Yellow	3/4" x 66 ft.	10 Roll sleeve/100 roll ctn.
C333-75	3M Super 33+ Electrical Tape	Black	3/4" x 66 ft.	Packaged Individually/100 roll ctn.

The "best" electrical tape on the market at competitive prices.

LaVanture series electrical tapes are designed for general medium to light duty applications. It is economically priced to meet volume cost margins.

LaVanture Electrical Tape				
Stock No.	Description	Color	Size	Carton Qty.
LPC-ETB	LaVanture Products Electrical Tape	Black	3/4" x 60 ft.	6 Roll sleeve/144 roll ctn.
LPC-ETBU	LaVanture Products Electrical Tape	Blue	3/4" x 66 ft.	6 Roll sleeve/144 roll ctn.
LPC-ETRD	LaVanture Products Electrical Tape	Red	3/4" x 66 ft.	6 Roll sleeve/144 roll ctn.
LPC-ETWH	LaVanture Products Electrical Tape	White	3/4" x 66 ft.	6 Roll sleeve/144 roll ctn.
LPC-ETGN	LaVanture Products Electrical Tape	Green	3/4" x 66 ft.	6 Roll sleeve/144 roll ctn.
LPC-ETGY	LaVanture Products Electrical Tape	Gray	3/4" x 66 ft.	6 Roll sleeve/144 roll ctn.
LPC-ETYW	LaVanture Products Electrical Tape	Yellow	3/4" x 66 ft.	6 Roll sleeve/144 roll ctn.



INDUSTRIAL TAPES



Strapping Tape

Series GS490 is a filament strapping tape with a polypropylene backing that prevents splitting or cracking and resists moisture and solvents. It is reinforced with a synthetic rubber/resin hot melt adhesive.

Strapping Tape

Stock No.	Description	Color	Size	Carton Quantity
GS490-75	Fiberglass Strapping Tape	Opaque	3/4" x 60 yd.	48 rolls
GS490-10	Fiberglass Strapping Tape	Opaque	1" x 60 yd.	36 rolls
GS490-20	Fiberglass Strapping Tape	Opaque	2" x 60 yd.	36 rolls

Carton Tape

HP100-2 is a high-performance clear tape with an aggressive acrylic adhesive that meets a wide range of temperature applications. Seals cartons for shipping and storage plus protects labels. Meets U.S. postal regulations. Also available is the **SD932** premium tape gun for easy application.

Carton Tape

Stock No.	Description	Color	Size	Carton Quantity
HP100-2	1.6 mil Packaging Tape	Clear	2" x 60 yd.	36 rolls
HP100-3	1.6 mil Packaging Tape	Clear	3" x 60 yd.	24 rolls
SD932	Premium Tape Gun		2"	1 Gun

Shrink Wrap

HSF450 Ultra Precision stretch film utilizes the latest technology to provide remarkable puncture resistance, excellent cling and incredible load retention. This film also provides excellent savings through extreme down gauging without any sacrifice in performance.

PKG3 Winwrap is ultra-low-gauge, pre-stretched hand wrap that is light and easy to handle. It has been pre-stretched for maximum coverage offering excellent cling retention, even in freezer temperatures.

Shrink Wrap

Stock No.	Description	Color	Size	Carton Quantity
HSF450	Ultra Precision Hand Stretch Film	Clear	450 mm x 9.4 m x 450 m	4 rolls
PKG3	Winwrap Pre-Stretched Hand Wrap	Clear	3" x 1000 ft.	18 rolls

Anti-Slip Tape

Series SS Stepsafe is an 60 grit, pressure sensitive backed tape used for exterior and interior applications to help eliminate accidents due to slippery surfaces. Typical applications include stairways, boats, docks, ramps, vehicle steps, tractor fenders, snowmobiles etc. Safestep is applied by simply removing the paper liner, positioning and pressing into place (we suggest a roller be used for application) on almost any clean, dry surface.

Anti-Slip Tape

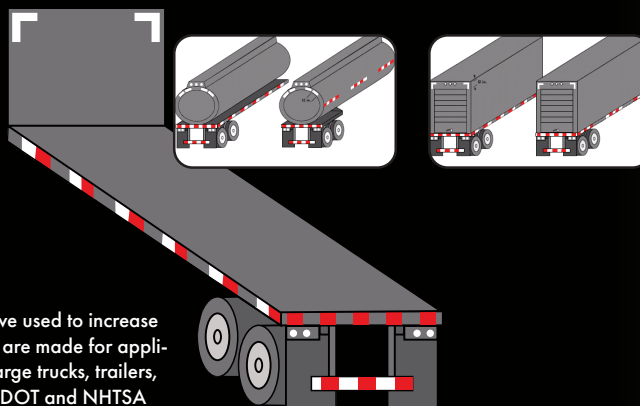
Stock No.	Description	Color	Size	Carton Quantity
SS2600	StepSafe Anti-Slip	Black Grit	2" x 60 yd.	24 rolls
SS3600	StepSafe Anti-Slip	Black Grit	3" x 60 yd.	16 rolls
SS4600	StepSafe Anti-Slip	Black Grit	4" x 60 yd.	12 rolls
SS6600	StepSafe Anti-Slip	Black Grit	6" x 60 yd.	8 rolls
SS12600	StepSafe Anti-Slip	Black Grit	12" x 60 yd.	1 roll
SS18600	StepSafe Anti-Slip	Black Grit	18" x 60 yd.	1 roll
SS24600	StepSafe Anti-Slip	Black Grit	24" x 60 yd.	1 roll
SS6024	StepSafe Anti-Slip, Pieces	Black Grit	6" x 24" pcs.	50 pcs.





Diamond Grade™ Conspicuity Tape

Is made from highly reflective prismatic sheeting with pressure sensitive adhesive used to increase visibility in many applications. Vehicle markings are made for application to sides and rear of emergency vehicle, large trucks, trailers, and school buses. They meet and exceed all US DOT and NHTSA requirements. Series 'C983' has a 10 year warranty. Series C913 has a 5 year warranty.



Conspicuity Safety Markings

Stock No.	Description	Carton Quantity
7" WHITE		11" RED
C983-32ES1C	3M 1" x 50 yds (7"WH 11"RD) Continuous	1 Roll
C983-32ES1.5C	3M 1.5" x 50 yds (7"WH 11"RD) Continuous	1 Roll
C983-32ES	3M 2" x 50 yds (7"WH 11"RD) Continuous	1 Roll
C983-32ESK	3M 2" x 18" x 50 yds (7"WH 11"RD) Kiss Cut	1 Roll
C983-32ES2P	3M 2" x 18" x 50 yds (7"WH 11"RD) 100 Pieces	1 Roll
C983-32ES3	3M 3" x 50 yds (7"WH 11"RD) Continuous	1 Roll
C983-32ES4	3M 4" x 50 yds (7"WH 11"RD) Continuous	1 Roll
C913-32C	3M 2" x 50 yds (7"WH 11"RD) Continuous	1 Roll
6" WHITE		6" RED
C983-326ES1C	3M 1" x 50 yds 6"x 6" WH/RD Continuous	1 Roll
C983-326ES	3M 1.5" x 50 yds 6"x 6" WH/RD Continuous	1 Roll
C983-326EES	3M 2" x 50 yds 6"x 6" WH/RD Continuous	1 Roll
C983-326ES3C	3M 3" x 50 yds 6"x 6" WH/RD Continuous	1 Roll
C983-326ES6K	3M 6" x 50 yds 6"x 6" WH/RD Continuous	1 Roll
C913-326C	3M 2" x 50 yds WH/RD Continuous	1 Roll
SOLID WHITE		
C983-10ESWH1C	3M 1" x 50 yds White Continuous	1 Roll
C983-10WHC	3M 2" x 50 yds White Continuous	1 Roll
C983-10ESWH	3M 2" x 50 yds White Kiss Cut	1 Roll
C983-10ESWH2P	3M 2" x 12" 100 White Pieces	1 Roll
C983-10ESWH3C	3M 3" x 50 yds White Continuous	1 Roll
SOLID RED		
C983-72ES1C	3M 1" x 50 yds Red Continuous	1 Roll
C983-72ESRD	3M 2" x 50 yds Red Continuous	1 Roll
C983-72ES3C	3M 3" x 50 yds Red Continuous	1 Roll
C983-72ES4C	3M 4" x 50 yds Red Continuous	1 Roll
C983-72ES6C	3M 6" x 50 yds Red Continuous	1 Roll
C913-72RDC	3M 2" x 50 yds Red Continuous	1 Roll
SCHOOL BUS AMBER		
C983-71ES	3M 1" x 50 yds Amber Continuous	1 Roll
C983-71ES2	3M 2" x 50 yds Amber Continuous	1 Roll
RAILWAY CAR AMBER		RAILWAY CAR WHITE
C983-71ES4K	3M 4" x 50 yds Amber Rolls Kiss Cut	1 Roll
C983-71ES4P	3M 4" x 18" Amber Pcs. 100 pcs/Ctn.	1 Roll
C983-10ESWH4K	3M 4" x 50 yds White Rolls Kiss Cut	1 Roll
C983-10ESWH4P	3M 4" x 18" White Pcs. 100 pcs/Ctn.	1 Roll

Other Applications

- Emergency Equipment
- Agricultural Equipment
- ATVs
- Personal Watercraft
- Utility Trailers
- Horse Trailers
- Refuge Containers
- Road Signage
- Mailboxes

Rail Cars

3M™ Diamond Grade™ Rail Car Markings meet and exceed FRA-224 specifications. With superior polycarbonate construction and low-temperature adhesive, these markings are easy to apply, bright and reflect at angles up to 90 degrees.

School Buses 3M™ Diamond Grade™

Conspicuity Markings for school buses. To mark emergency exits, side and rear perimeter for enhanced visibility and detection. These markings are required by the school transportation industry standards: FMVSS 217 and 131, CSA D250 (Canada).

Other Brands of Conspicuity Tape Available. Call for Information and Pricing.

Safety features you can see.

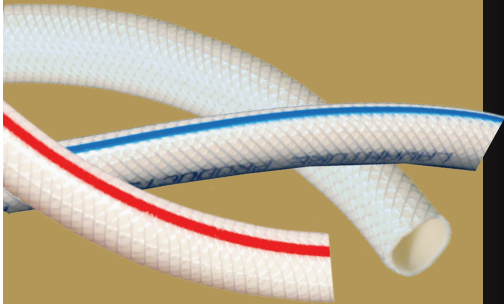
C913 Series meets or exceeds truck and trailer regulations so that you can keep moving safely. Choose the Conspicuity tape with safety features you can see.

- UV-Durable top-coat
- Thin and flexible
- Can be applied at temperatures as low as 36 degrees F.
- High Visibility
- Meets regulation FMVSS 10B
- 5 Year warranty

CONSPICUITY TAPES

Hose Products:

- Pressure Hose
- Clear Vinyl Tubing
- Water Hose
- Fill Hose
- Vent Hose
- Uniloop Hose
- Saniflex Hose
- Sewer Hose
- Drain Hose



HOSE PRODUCTS

Quality Hose Products

LaVanture Products stocks and distributes a wide variety of high quality hose products from leading manufacturers. All these products meet our quality standards and have passed a rigid testing program. If we sell it... we stand behind it!!

Reinforced Pressure Hose

This white PVC opaque hose is designed and formulated as 150PSI cold water pressure and drinking water lines. It is IAMPO listed, FDA certified title 21 parts 170-199, NSF61 / 51 and ROHS compliant. The compound contains no substances designated as hazardous under California proposition 65.

Pressure Hose				
Stock No.	Description	Color	Size	Roll Size
PR38	Pressure Hose	White	3 / 8"	250' roll
PR50	Pressure Hose	White/Clear	1 / 2"	500' roll
PR50-BS	Pressure Hose Blue Stripe	White	1 / 2"	500' roll
PR50-RS	Pressure Hose Red Stripe	White	1 / 2"	500' roll
PR58	Pressure Hose	White	5 / 8"	250' coil

Clear Vinyl Tubing

This non-toxic food and beverage grade non-reinforced clear vinyl tubing is designed for a wide variety of applications. It is FDA certified title 21 parts 170-199, NSF61 / 51, ROHS compliant and UL certified USDA.

Tubing				
Stock No.	Description	Color	Size	Roll Size
P100	Vinyl Tubing	Clear	1 1 / 4"	500' roll
P108	Poly Tubing	Clear	1 / 2"	500' roll
X-PVC108	PVC Tubing	Clear	1 / 2"	250' roll
X-PVC86	PVC Tubing	Clear	3 / 8"	250' roll

Compressible Drain/Sewer Hose

Constructed of blue vinyl coated, high tensile spring steel wire it is compressible and withstands temperature extremes making it the perfect choice for recreational vehicles. Shipped in a hanger package.

Drain Hose				
Stock#	Description	Color	Size	Carton Quantity
485PB10	Standard Drain Hose, bagged	Blue	3" x 10"	25
485PB10HD	High Density Drain Hose, bagged	Blue	3" x 10"	10
485PB20	Standard Drain Hose, bagged	Blue	3" x 20"	10
485PB20HD	High Density Drain Hose, bagged	Blue	3" x 20"	6

Custom Sizes Available.....Call for Pricing and Availability

High Quality Hose Products

www.lavanture.com | 800.348.7625 | sales@lavanture.com

Uni-Loop Helix Hose

This is a lightweight polyethylene copolymer hose with a integral helix. A smooth interior assures efficient air flow and is crush resistant featuring good flexibility. IAMPO compliant, it is ideal for vacuum and drain hose applications also suitable for use as wiring conduit.

Uniloop Hose				
Stock No.	Description	Color	Size	Carton Qty
LU1-50	Uniloop Hose	Gray	1"	500
LU1534750	Uniloop Hose w/ cuff	Gray	1 1/2" x 34-1/4" L	
LU15MC-108	Uniloop Hose w/ molded cuff	Gray	1 1/2" x 108" L	25
LU15MC-12	Uniloop Hose w/ molded cuff	Gray	1 1/2" x 12" L	50
LU15MC-29	Uniloop Hose w/ molded cuff	Gray	1 1/2" x 29" L	25
LU15MC-31	Uniloop Hose w/ molded cuff	Gray	1 1/2" x 31" L	25
LU15MC-35	Uniloop Hose w/ molded cuff	Gray	1 1/2" x 35" L	25
LU15MC-40	Uniloop Hose w/ molded cuff	Gray	1 1/2" x 40" L	25
LU15MC-46	Uniloop Hose w/ molded cuff	Gray	1 1/2" x 46" L	20
LU15MC-48	Uniloop Hose w/ molded cuff	Gray	1 1/2" x 48" L	20
LU15MC-52.250	Uniloop Hose w/ molded cuff	Gray	1 1/2" x 52 1/4" L	20
LU15MC-62	Uniloop Hose w/ molded cuff	Gray	1 1/2" x 62" L	25
LU15MC-66	Uniloop Hose w/ molded cuff	Gray	1 1/2" x 66" L	
LU15MC-68	Uniloop Hose w/ molded cuff	Gray	1 1/2" x 68" L	25
LU15MC-69	Uniloop Hose w/ molded cuff	Gray	1 1/2" x 69" L	
LU15MC-76	Uniloop Hose w/ molded cuff	Gray	1 1/2" x 76" L	25
LU15MC-77	Uniloop Hose w/ molded cuff	Gray	1 1/2" x 77" L	
LU15MC-88	Uniloop Hose w/ molded cuff	Gray	1 1/2" x 88" L	25
LU15MC-90	Uniloop Hose w/ molded cuff	Gray	1 1/2" x 90" L	

Vent Hose

LPC vent hose features an all plastic construction making it easy to cut with a smooth liner. The kink free flexible design allows for a sharp bend installation. This vent hose is IAMPO and CSA approved.

Vent Hose				
Stock No.	Description	Color	Size	Carton Quantity
F-1180	Vent Hose	White	2"	50
F-1316C	Vent Hose	White	1-13/16"	100
F-1175	Vent Hose	Black	1-3/4" x 25"	100

Sewer Hose

Valterra vinyl sewer hose features superior flexibility and is crack resistant for use in all the weather conditions. The hose compresses for easy storage while you travel. It is available in standard, EZ flush and quick drain to meet a variety of applications.

Sewer Hose				
Stock No.	Description	Color	Size	Carton Quantity
VALD040080	Sewer Hose w/ T1024 adapter	Blue	10'	20 pc.
VALD040083	EZ Flush Hose w T1024 adapter	Brown	20'	10 pc.
VALD04021	Quick Drain w/ straight adapter	Blue	20'	10 pc.



Smooth -Bor

A green/white hose designed for water fill, drain or vent hose. The all plastic construction makes it easy to cut and it is flexible for kink free bends. It is IAPMO compliant and features a smooth inner liner.

Fill Hose			
Stock No.	Description	Color	Size
F-1125	Fill Hose	Green/White	1 1/4" x 25'
F-1125F	Fill Hose w/ flats	Green/White	1 1/4" x 10'
F-1135	Fill Hose	Green/White	1 3/8" x 25'
F-1135F	Fill Hose w/ flats	Green/White	1 3/8" x 10'
F-1135F8*	Fill Hose	Green/White	1 3/8" x 8'
F-750	Fill Hose	Green/White	3/4" x 10'
F-750F	Fill Hose w/ flats	Green/White	3/4" x 10'

Saniflex Fill Hose

A potable water hose constructed from plastic helix supported PVC that is lightweight and flexible for easy installation in tight spaces. It is IAPMO compliant and features a smooth inner surface.

Saniflex Hose			
Stock No.	Description	Color	Size
SF1125-50	Saniflex Hose IAPMO	White	1 1/4" x 50'
SF1135-50	Saniflex Hose IAPMO	White	1 3/8" x 50'
SF1158-50*	Saniflex Hose IAPMO	White	1 5/8" x 50'

Utility Water Hose

A multi-ply utility water hose for pressurized systems it features both a male and female octagon connectors with protective collars. It is drinking water safe for use in marine, RV, home and industrial applications. This high quality hose features a 7 year manufacturers guarantee.

Utility Water Hose			
Stock No.	Description	Color	Size
PR7525	Utility Water Hose	White	1/2" x 25'
PR7550	Utility Water Hose	White	1/2" x 25'
PR8525	Utility Water Hose	White	5/8" x 50'
PR8550	Utility Water Hose	White	5/8" x 50'

Specialty Hose

There are also wide variety of other specialty hoses available. FLEXT-7B5 Thermo-Hose is a heated water hose. FMGS1-7 is stretch hose with 3:1 cuff. FT73-3 Hose is light weight black thermoplastic rubber hose reinforced with a spring steel wire helix.

Special Custom Order Hoses*			
Stock No.	Description	Color	Size
FLEXT-7B5	Thermo Rubber Hose	Black	5" x 25'
FMGS1-7	LMG Stretch Hose w/ 3:1 cuff	Black	1.22" X 7'
FT73-3	Reinforced Rubber Hose	Black	3" x 3'

Quick Disconnect Sprayer Hose

Stock No.	Description	Color	Size
LSHC18415	Quick Disconnect W/ SPRAY NOZZLE	Blue	15"
LHC18515	Quick Disconnect WO/ SPRAY NOZZLE	Blue	15"

* Custom Hose

Custom and other specialty hoses are available to meet your application requirements. Please contact us with your specifications.

Rotational Molded O.E.M. Polyethylene Water Tanks

LaVanture Rotational Molded Fresh Water Tanks are made from a high quality durable F.D.A. approved polyethylene material. Their one piece construction, stain, corrosion and rust resistant features make them ideal for replacement or O.E.M. Installation on Recreational Vehicle, Marine and other products requiring storage of fresh water.



Each Tank is Individually
Boxed* for Lower UPS
Rates



POLYETHYLENE WATER TANKS

Polyethylene Water Tanks				
Stock No.	Description	Size	Outside Dimensions	Carton Quantity
T161	Polyethylene Water Tank	10 gallon	17" x 14" x 10"	1 UPS boxed
T163	Polyethylene Water Tank	16 gallon	24" x 15" x 10"	1 UPS boxed
T165	Polyethylene Water Tank	21 gallon	39" x 16" x 8"	1 UPS boxed
T167	Polyethylene Water Tank	30 gallon	34" x 18" x 12"	1 UPS boxed
T169	Polyethylene Water Tank	42 gallon	39" x 18" x 14"	1 UPS boxed
T100*	Polyethylene Water Tank	100 gallon	81" x 26" x 11"	1 not boxed
* T100 Not Boxed				

Access Covers
Setting the standard for access cover applications the LaVanture Products screw-in covers feature finger grips for easy removal and replacement. All covers feature a positive o-ring seal for air tight seal. Available in three sizes.



Access Covers				
Stock No.	Description	Color	Size	Carton Quantity
VAP400B	Access Cover	Black	4"	100 pcs.
VAP400W	Access Cover	White	4"	100 pcs.
VAP400DW	Access Cover	Dream White	4"	100 pcs.
VAP500B	Access Cover	Black	5"	100 pcs.
VAP500W	Access Cover	White	5"	100 pcs.
VAP500SW	Access Cover	Sand	5"	100 pcs.
AC600B	Access Cover	Black	6"	50 pcs.
AC600W	Access Cover	White	6"	50 pcs.



OEM Waste Valves

LaVanture Products is a national distributor of **Valterra Products**, the leader in the manufacturer of O.E.M. plumbing parts and accessories. **Valterra offers a broad line of products for O.E.M and aftermarket applications.** Featuring: Fixed WYE Valve Assemblies, ELL Double Rotating Valve Assemblies, Double WYE Valve Assemblies, EZ Hose Carriers, Solid Extension Tubes, Caps, Adapters & Accessories and Many other O.E.M. Quality Products.

CABLE VALVES



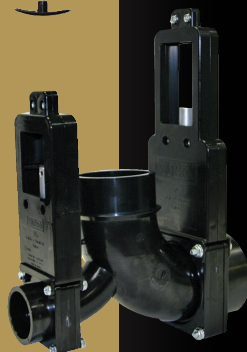
VALH1001H60



VALT1001H



VALT40H



VALT81H

OEM - Waste Valves

Cable Valves

Flexible cable extension valves enable modern interior design not constrained by the waste valve placement. The cable easily bends around obstacles to the main control cabinet for convenient access of the waste valve handle.

WE OFFER THIS EXTENSION TWO WAYS.

1. Valve and cable are sold separately and are attached at the time of installation.
2. Valve and cable are sold as one and comes to you pre-attached.

THE BENEFITS OF THE FLEXIBLE CABLE SYSTEM

- Allows for valve placement near heated compartment/tanks and away from low or exposed areas
- Eliminates design problems with rigid extensions that don't flex around framing or hang below RV side wall
- Waste valve handle can be placed in control compartments for easy access

Pre-Attached Cable Valves

Stock No.	Material	Carton Quantity
VALH1001H36	Cable Valve, 1-1/2", Hub x Spigot With 36" Cable	10
VALH1001H48	Cable Valve, 1-1/2", Hub x Spigot With 48" Cable	10
VALH1001H60	Cable Valve, 1-1/2", Hub x Spigot With 60" Cable	10
VALH1001H72	Cable Valve, 1-1/2", Hub x Spigot With 72" Cable	10
VALH1001H96	Cable Valve, 1-1/2", Hub x Spigot With 96" Cable	10
VALH1001H120	Cable Valve, 1-1/2", Hub x Spigot With 120" Cable	10
VALH1001H144	Cable Valve, 1-1/2", Hub x Spigot With 144" Cable	10
VALH40H36	Cable Valve, 3", Hub x Spigot With 36" Cable	8
VALH40H48	Cable Valve, 3", Hub x Spigot With 48" Cable	8
VALH40H60	Cable Valve, 3", Hub x Spigot With 60" Cable	8
VALH40H72	Cable Valve, 3", Hub x Spigot With 72" Cable	8
VALH40H96	Cable Valve, 3", Hub x Spigot With 96" Cable	8
VALH40H120	Cable Valve, 3", Hub x Spigot With 120" Cable	8
VALH40H144	Cable Valve, 3", Hub x Spigot With 144" Cable	8

Single Cable Valves - No Cable

Stock No.	Material	Carton Quantity
VALT1001H	Cable Valve, 1-1/2", Hub x 1-1/2" Spigot No Cable	32
VALT1001BH	Cable Valve, 1-1/2", Hub x 1-1/2" Hub No Cable	32
VALT40H	Cable Valve, 3", Hub x 3" Spigot No Cable	12
VALT40AH	Cable Valve, 3", Spigot x 3" Spigot No Cable	12

Pre-Attached Cable Valves

Stock No.	Material	Carton Quantity
VALT81H	ELL Double Rotating Valve, 3" Hub x 1-1/2" Hub x 3" Spigot Outlet, No Cables	4
VALT84H	ELL Double Rotating Valve, 3" Hub x 3" Hub x 3" Bayonet Cap, No Cables	4
VALT85H	ELL Double Rotating Valve, 3" Hub x 3" Hub x 3" Hub Outlet, No Cables	4
VALT83H	ELL Double Rotating Valve, 3" Hub x 1-1/2" Hub, x 2" Hub x 3" Spigot Outlet, No Cables	4
VALT68H	Heel Inlet Rotating Valve, 3" x 1-1/2" Hub x Bayonet Cap, No Cables	4

Additional configurations available

www.lavanture.com | 800.348.7625 | sales@lavanture.com

OEM - Waste Valves

Cables

- Allows for valve placement in protected locations
- Valve handle can be placed for easy access
- Folding handle for easy bulk head installation
- Stainless Steel inner wire

Cables		
Stock No.	Material	Carton Quantity
VALTC24	Flexible Cable Replacement, 24"	50
VALTC36	Flexible Cable Replacement, 36"	50
VALTC48	Flexible Cable Replacement, 48"	50
VALTC60	Flexible Cable Replacement, 60"	50
VALTC72	Flexible Cable Replacement, 72"	50
VALTC84	Flexible Cable Replacement, 84"	10
VALTC96	Flexible Cable Replacement, 96"	10
VALTC120	Flexible Cable Replacement, 120"	10
VALTC144	Flexible Cable Replacement, 144"	10

Extension Tubes

Extension Tubes		
Stock No.	Material	Carton Quantity
VALTX6T	Extension Tube, 6", 3-1/2" Stud	90
VALTX9T	Extension Tube, 9", 3-1/2" Stud	200
VALTX12T	Extension Tube, 12", 3-1/2" Stud	300
VALTX24T	Extension Tube, 24", 3-1/2" Stud	100
VALTX36T	Extension Tube, 36", 3-1/2" Stud	150
VALTX48T	Extension Tube, 48", 3-1/2" Stud	200
VALTX6	Extension Tube, 6", 3-1/2" Stud, Handle & Plate	70
VALTX9	Extension Tube, 9", 3-1/2" Stud, Handle & Plate	50
VALTX12	Extension Tube, 12", 3-1/2" Stud, Handle & Plate	150
VALTX24	Extension Tube, 24", 3-1/2" Stud, Handle & Plate	40
VALTX36	Extension Tube, 36", 3-1/2" Stud, Handle & Plate	70
VALTX48H	Extension Tube, 48", 3-1/2" Stud, Handle & Plate	80
VALTX6H	Extension Tube, 6", 3-1/2" Stud, Handle	90
VALTX9H	Extension Tube, 9", 3-1/2" Stud, Handle	70
VALTX12H	Extension Tube, 12", 3-1/2" Stud, Handle	70
VALTX14H	Extension Tube, 14", 3-1/2" Stud, Handle	70
VALTX24H	Extension Tube, 24", 3-1/2" Stud, Handle	70
VALTX36H	Extension Tube, 36", 3-1/2" Stud, Handle	90
VALTX48H	Extension Tube, 48", 3-1/2" Stud, Handle	100

Length refers to tube length
Additional 2" length is available with adjustable stud



VALTC24



VALTX12



VALTX14H



VALTX12T

CABLE & EXTENSION TUBES



VALT1001



VALT40



VALT50



VALT1002

OEM - Waste Valves

1-1/2" Valve Assemblies

1-1/2" Valve Assemblies

Stock No.	Material	Carton Quantity
VALT1001	Waste Valve, 1-1/2", Spigot x Hub	36
VALT1001A	Waste Valve, 1-1/2", Spigot x Spigot	36
VALT1001B	Waste Valve, 1-1/2" Hub x 1-1/2" Hub	36
VALT1001C	Waste Valve, 1-1/2" Hub x 1-1/2" Male Thread, Cap & Strap	48
VALT1001D	Waste Valve, 1-1/2" Spigot x 1-1/2" Male Thread, Cap & Strap	48
VALT1001NH	Waste Valve, 1-1/2" Spigot x 1-1/2" Hub, No Handle	36

1-1/2" Hub fittings are also 2" Spigots

2" Valve Assemblies

2" Valve Assemblies

Stock No.	Material	Carton Quantity
VALT1002	Waste Valve, 2" Spigot x 2" Hub	45
VALT1002A	Waste Valve, 2" Spigot x 2" Spigot	45
VALT1002B	Waste Valve, 2" Hub x 2" Hub	45

3" Valve Assemblies

3" Valve Assemblies

Stock No.	Material	Carton Quantity
VALT40	Waste Valve, 3" Hub x 3" Spigot	18
VALT40A	Waste Valve, 3" Spigot x 3" Spigot	18
VALT40B	Waste Valve, 3" Hub x 3" Hub	18
VALT40C	Waste Valve, 3" Hub x 3" MPT	18
VALT40D	Waste Valve, 3" FPT x MPT	18
VALT40NH	Waste Valve, 3" Hub x 3" Spigot, No Handle	18

3" Valve Assemblies with Caps

3" Valve Assemblies with Caps

Stock No.	Material	Carton Quantity
VALT50	Waste Valve, 3" Hub x 3" Bayonet Cap	18
VALT50-1	Waste Valve, 3" Hub x 3" Bayonet Cap and 3/4" Hose Connection	18
VALT50B	Waste Valve, 3" FPT x 3" Bayonet Cap	18
VALT50C	Waste Valve, 3" MPT x 3" Bayonet Cap	18
VALT50W	Waste Valve, 3" Hub x 3" Bayonet Cap, White	18

Additional configurations available

VALVE ASSEMBLIES

OEM - Waste Valves

3" Rotating San Tee Valve Assemblies

3" Rotating San Tee Valve Assemblies		
Stock No.	Material	Carton Quantity
VALT11	San Tee Rotating Valve, 3" Hub x 1-1/2" Hub x 3" Bayonet Cap	8
VALT12	San Tee Rotating Valve, 3" Hub x 2" Hub x 3" Bayonet Cap	8

3" & 1-1/2" Rotating San Tee Valve Assemblies

3" & 1-1/2" Rotating San Tee Valve Assemblies		
Stock No.	Material	Carton Quantity
VALT18	San Tee Double Rotating Valve, 3" Hub x 1-1/2" Hub x 3" Bayonet Cap	8
VALT18B	San Tee Double Rotating Valve, 3" Spigot x 1-1/2" Spigot x 3" Bayonet Cap	8
VALT18C	San Tee Double Rotating Valve, 3" Hub x 1-1/2" Spigot x 3" Bayonet Cap	8

Eliminates solvent bonding of 1-1/2" and 3" valves

3" Rotating Double San Tee Valve Assemblies

3" Rotating Double San Tee Valve Assemblies		
Stock No.	Material	Carton Quantity
VALT20	San Tee Double Rotating Valve, 3" Hub x 1-1/2" Hub x 2" Hub x 3" Bayonet Cap	8

3" Wye Fixed Valve Assemblies

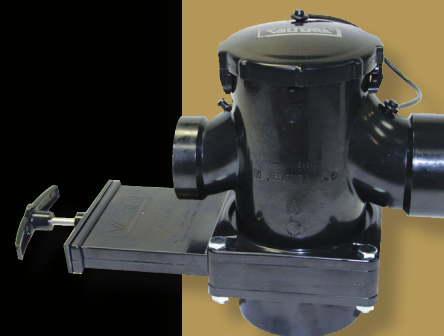
3" Wye Fixed Valve Assemblies		
Stock No.	Material	Carton Quantity
VALT30	Wye Fixed Valve, 3" Hub x 2" Hub x 3" Bayonet Cap	8
VALT30L	Wye Fixed Valve, 3" Hub x 2" Hub x 3" Bayonet Cap, Left Orientation	8



VALT11



VALT18A



VALT20

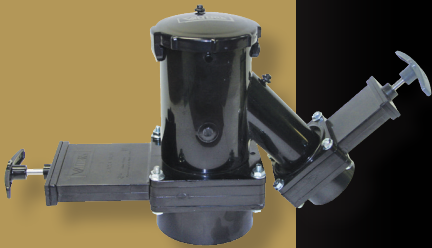


VALT30

VALVE ASSEMBLIES



VALTR30



VALT38



VALTR38



VALT60

VALVE ASSEMBLIES

OEM - Waste Valves

3" Rotating Wye Valve Assemblies

3" Rotating Wye Valve Assemblies

Stock No.	Material	Carton Quantity
VALTR30	Wye Rotating Valve, 3" Hub x 2" Hub x 3" Bayonet Cap	8
VALTR30A	Wye Rotating Valve, 3" Spigot x 2" Hub x 3" Bayonet Cap	8

3" Fixed Wye Double Valve Assemblies

3" Fixed Wye Double Valve Assemblies

Stock No.	Material	Carton Quantity
VALT38	Wye Fixed Double Valve, 3" Hub x 1-1/2" Rotating Hub x 3" Bayonet Cap	6
VALT38B	Wye Rotating Valves, 3" Spigot x 1-1/2" Spigot x 3" Bayonet Cap	6
VALT38C	Wye Rotating Valves, 3" Hub x 1-1/2" Rotating Spigot x 3" Bayonet Cap	6

Eliminates solvent bonding of 1-1/2" and 3" valves

3" & 1-1/2" Rotating Wye Valve Assemblies

3" & 1-1/2" Rotating Wye Valve Assemblies

Stock No.	Material	Carton Quantity
VALTR38	Wye Rotating Valves, 3" Hub x 1-1/2" Hub x 3" Bayonet Cap	6
VALTR38B	Wye Rotating Valves, 3" Spigot x 1-1/2" Hub x 3" Bayonet Cap	6
VALTR38C	Wye Rotating Valves, 3" Hub x 1-1/2" Spigot x 3" Bayonet Cap	6

Eliminates solvent bonding of 1-1/2" and 3" valves

3" Rotating Heel Inlet 1/4 Valve Assemblies

3" Rotating Heel Inlet 1/4 Bend Valve Assemblies

Stock No.	Material	Carton Quantity
VALT60	Heel Inlet Rotating Valve, 3" Hub x 2" Hub x 3" Bayonet Cap	8

OEM - Waste Valves

3" & 1-1/2" Rotating Heel Inlet 1/4 Valve Assemblies

3" & 1-1/2" Rotating Heel Inlet 1/4 Bend Valve Assemblies		
Stock No.	Material	Carton Quantity
VALT68	Heel Inlet Rotating Valve, 3" Hub x 1-1/2" Hub x 3" Bayonet Cap	6
VALT68B	Heel Inlet Rotating Valve, 3" Spigot x 1-1/2" Spigot x 3" Bayonet Cap	6
VALT68C	Heel Inlet Rotating Valve, 3" Hub x 1-1/2" Spigot x 3" Bayonet Cap	6
Eliminates solvent bonding of 1-1/2" and 3" valves		

3" Rotating 90° Ell Valve Assemblies with Cap

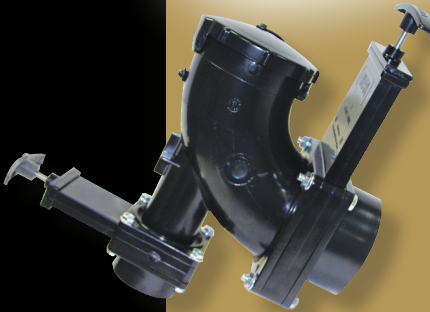
3" Rotating 90° Ell Valve Assemblies with Cap		
Stock No.	Material	Carton Quantity
VALT70	Ell 90° Rotating Valve, 3" Hub x 3" Bayonet Cap	8

3" Rotating 90° Ell Valve Assemblies

3" Rotating 90° Ell Valve Assemblies		
Stock No.	Material	Carton Quantity
VALT71	Ell 90° Rotating Valve, 3" Hub x 3" Elbow with Spigot Outlet	8
VALT72	Ell 90° Rotating Valve, 3" Hub x 3" Elbow with Hub Outlet	8
VALT72ANH	Ell 90° Rotating Valve, 3" Spigot x 3" Elbow with Hub Outlet, No Handle	8

3" & 1-1/2" Rotating Double Ell Valve Assemblies

3" & 1-1/2" Rotating Double Ell Valve Assemblies		
Stock No.	Material	Carton Quantity
VALT80	Ell Double Rotating Valve, 3" Hub x 1-1/2" Hub x 3" Bayonet Cap	8
VALT80B	Ell Double Rotating Valve, 3" Spigot x 1-1/2" Spigot x 3" Bayonet Cap	8
VALT80C	Ell Double Rotating Valve, 3" Hub x 1-1/2" Spigot x 3" Bayonet Cap	8



VALT68



VALT70



VALT71



VALT80

VALVE ASSEMBLIES



VALT81



VALT82



VALT84



VALT1029-1BU



VALT1029-2BU

VALVE ASSEMBLIES

OEM - Waste Valves

3" & 1-1/2" Rotating Double Ell Valve Assemblies

3" & 1-1/2" Double Ell Valve Assemblies

Stock No.	Material	Carton Quantity
VALT81	Ell Double Rotating Valve, 3" Hub x 1-1/2" Hub x 3" Spigot Outlet	6
VALT81B	Ell Double Rotating Valve, 3" Spigot x 1-1/2" Spigot x 3" Spigot Outlet	6
VALT81C	Ell Double Rotating Valve, 3" Hub x 1-1/2" Spigot x 3" Spigot Outlet	6
VALT81NH	Ell Double Rotating Valve, 3" Hub x 1-1/2" Hub x 3" Spigot Outlet, No Handle	6

3" & 1-1/2" Double Ell Valve Assemblies

3" & 1-1/2" Double Ell Valve Assemblies

Stock No.	Material	Carton Quantity
VALT82	Ell Double Rotating Valve, 3" Hub x 1-1/2" Hub x 2" Hub x 3" Bayonet Cap	8
VALT83	Ell Double Rotating Valve, 3" Hub x 1-1/2" Hub x 2" Hub x 3" Spigot Outlet	6

3" Double Ell Valve Assemblies

3" Double Ell Valve Assemblies

Stock No.	Material	Carton Quantity
VALT84	Ell Double Rotating Valve, 3" Hub x 3" Hub x 3" Bayonet Cap	4
VALT84B	Ell Double Rotating Valve, 3" Spigot x 3" Spigot x 3" Bayonet Cap	4
VALT85	Ell Double Rotating Valve, 3" Hub x 3" Hub x 3" Hub Outlet	4
VALT85B	Ell Double Rotating Valve, 3" Spigot x 3" Spigot x 3" Hub Outlet	4
VALT85NH	Ell Double Rotating Valve, 3" Hub x 3" Hub x 3" Hub Outlet, No Handle	4

3" Terminator Adapters

3" Terminator Adaptors

Stock No.	Material	Carton Quantity
VALT1029-1BU	Termination Adapter, 3" Spigot x 3" Bayonet	68
VALT1029-2BU	Termination Adapter, 3" Hub x 3" Bayonet	72
VALT1029-4BU	Termination Adapter, 3" Male Thread x 3" Bayonet	70

OEM - Waste Valves

Cable, Hose Adapters & Accessories

Cable, Hose Adapters & Accessories		
Stock No.	Material	Carton Quantity
VALT1020BU	Waste Valve Cap, 3" Bayonet, Black, Bulk	160
VALT1020-1BU	Waste Valve Cap, 3", 3/4" GHT with Cap, Black, Bulk	125
VALT1020-1D	Hose Cap, 3/4", with Strap, Black, Bulk	200
VALT1020-1E	Hose Plug, 3/4" Male Thread, with Strap, Off White, Bulk	250
VALT1024BU	Hose Adapter, 3", Straight, Black, Bulk	100
VALT1025BU	Hose Adapter, 45°, Black, Bulk	50
VALF02-2018	Female Thread Cap, 3", with 10" Chain	125

PTFE Thread Tape

- .0035 mil thickness
- .35 density

PTFE Thread Tape		
Stock No.	Material	Carton Quantity
C950-15	PTFE Thread Tape, 1/2" x 520", Bulk	100



EZ Hose Carriers

- Comes assembled with mounting brackets for easy installation
- Interlocking cap has round handle for easy quarter turn on-off and strap to prevent loss
- Mounting screws included

EZ Hose Carriers		
Stock No.	Material	Carton Quantity
VAL0148	EZ Hose Carrier, 18", White, Bulk	12
VAL0150BU	EZ Hose Carrier, 26", White, Bulk	6
VAL0150BK	EZ Hose Carrier, 26", Black, Bulk	6
VAL0151BU	EZ Hose Carrier, 46", White, Bulk	4
VAL0151BK	EZ Hose Carrier, 46", Black, Bulk	4
VAL0153BU	EZ Hose Carrier, 64", White, Bulk	4
VAL0158BU	EZ Hose Carrier, 72", White, Bulk	4
VAL0158BK	EZ Hose Carrier, 72", Black, Bulk	4
VAL0157	Saddle For EZ Hose Carrier, White, Bulk	80
VAL0157BK	Saddle For EZ Hose Carrier, Black, Bulk	80
VAL0161	Cap And Strap For EZ Hose Carrier, White, Bulk	6
VAL0161BK	Cap And Strap For EZ Hose Carrier, Black, Bulk	6
VAL0156	Center Support Saddle For EZ Hose Carrier, White, Bulk	100
VAL0156BK	Center Support Saddle For EZ Hose Carrier, Black, Bulk	100



VALT1020BU



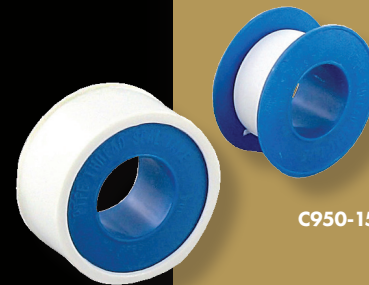
VALF02-2018



VALT1024BU



VALT1025BU



C950-15



VAL0161



VAL0157

VALVE ASSEMBLIES



OEM - Inlets & Hatches

LaVanture Products is proud to handle a complete line of Valterra water inlets, water inlet hatches, cable hatches and sewer hose hatches. These products are manufactured from high quality UV stabilized plastic and are in-stock for immediate shipment.

Flush Mount Water Inlets, MPT include a check valve, garden hose swivel fitting gripper and press-in dust plug with a 1/2" MPT inside connection. Part number VAL 0165BU features a die cast flange.

Gravity Water Inlets feature a bayonet style cap, a 1/2" air vent for faster fill rate and a 1 1/4" barb connection.

Gravity/City Water Inlet Hatches feature a gravity/city water inlet in a lockable hatch with 1/2" MPT / 1 1/4" barb connection and 1/2" air vent for faster fill rate. Cut out dimensions are 5 7/8" W x 4 3/4" H with outside dimensions of 7 5/8" W x 6 1/2" H.

Gravity/City Water Inlet feature 1/2" MPT / 1 1/4" barb connection and 1/2" air vent for faster fill rate. Outside dimensions of 7 1/2" W x 5 1/4" H.

Universal Gravity Water Inlet Hatches feature a 1 1/4" barb connection and 1/2" air vent for faster fill rate. Universal size fits both 4 1/4" W x 4 3/4" H and 4" W x 3" H cutouts with outside dimensions of 6" W x 6 1/2" H.

INLETS & HATCHES



VAL0168BU



VAL0165BU



VAL0168BKBU



VAL2003BU



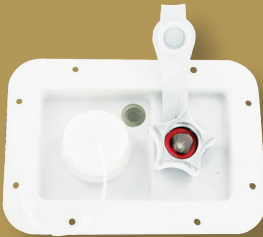
VAL2003BKBU



VAL2004BU



VAL2004BKBU



VAL2001BU



VAL2001BKBU



VAL2002BU



VAL2002BKBU

Inlets & Hatches

Stock No.	Description	Carton Quantity
VAL0165BU	Water Inlet, Die Cast Flange, Bulk	24
VAL0168BKBU	Water Inlet Plastic Black, MPT Carded	24
VAL0168BU	Water Inlet Plastic White, MPT Bulk	24
VAL2001BKBU	Gravity/City Rectangle Flange, Black, Bulk	24
VAL2001BU	Gravity/City Rectangle Flange, White, Bulk	24
VAL2002BKBU	Gravity Fill Hatch Black, Bulk	22
VAL2002BU	Gravity Fill Hatch White, Bulk	22
VAL2003BKBU	Water Inlet Gravity Black, Bulk	40
VAL2003BU	Water Inlet Gravity White, Bulk	40
VAL2004BKBU	Gravity/Plastic City Inlet Hatch Black, Bulk	24
VAL2004BU	Gravity/Plastic City Inlet Hatch White, Bulk	24

Round Cable Hatches are available in small and medium sizes. Small hatch dimensions are 4.4" by 2.3" with a cutout of 3" and accommodates up to a 30 amp cable. The medium hatch dimensions are 4.6" by 2.6" with a cutout of 3.5" and accommodates up to 50 amp cable.

Square Cable Hatches dimensions are 4.3" by 2.3" with a cutout of 2.8" and accommodates up to a 30 amp cable.

Cable Hatch Compartments are lockable hatches constructed from UV paintable stabilized plastic. Outside dimensions are 7.625" W x 6.5" H with cutout of 5.875" W x 4.75" H

Sewer Hose Hatches attach to PVC pipe with a convenient thumb lock. Dimensions are 5⁷/₈" W x 4 ³/₄" H with cutout of 7⁵/₈" W x 6-1/2" H

Inlets & Hatches		
Stock No.	Description	Carton Quantity
VAL2135BKBU	Cable Hatch Deluxe Round, Black, Bulk	12
VAL2135BU	Cable Hatch Deluxe Round, Polar White, Bulk	12
VAL2137BKBU	Cable Hatch Medium Round, Black, Bulk	16
VAL2137BU	Cable Hatch Medium Round, Polar White, Bulk	16
VAL2138BU	Cable Hatch Medium Round, Col. White, Bulk	16
VAL2140BKBU	Cable Hatch Small Round, Black, Bulk	18
VAL2140BU	Cable Hatch Small Round, Polar White, Bulk	18
VAL2141BU	Cable Hatch Small Round, Col. White, Bulk	18
VAL2143BKBU	Cable Hatch Square, Black, Bulk	18
VAL2143BU	Cable Hatch Square, Polar White, Bulk	18
VAL2150BKBU	Cable Hatch Compartment, Black, Bulk	16
VAL2150BU	Cable Hatch Compartment, White, Bulk	16
VAL2151BKBU	Electric Hatch Large Black, Bulk	12
VAL2151BU	Electric Hatch Large Polar White, Bulk	12
VAL0471BKBU	Sewer Hose Hatch Black w/Thumb Lock Bulk	24
VAL0471BU	Sewer Hose Hatch White w/Thumb Lock Bulk	24



Medium Round Cable Hatch



Square Cable Hatch



Small Round Cable Hatch



Sewer Hose Hatch



Cable Hatch Compartment



Gravity/City Water Inlet Hatch

CABLE & SEWER HOSE HATCHES



RV Fill Water Hose



Valve Jockey

Valve Jockey designed and manufactured exclusively by Valterra it is a more accessible handle that eliminates difficult side pulls, making it easy to open and close valves.

RV Water Fill Hoses

Stock No.	Description	Carton Quantity
VAL1002	RV Water Fill Hose 2' x 1-3/8"	24
VAL1003	RV Water Fill Hose 3' x 1-3/8"	24
VAL1004	RV Water Fill Hose 4' x 1-3/8"	24
VAL1005	RV Water Fill Hose 5' x 1-3/8"	24
VAL1006	RV Water Fill Hose 6' x 1-3/8"	24
VAL1008	RV Water Fill Hose 8' x 1-3/8"	24
VAL1010	RV Water Fill Hose 10' x 1-3/8"	24
VAL1012	RV Water Fill Hose 2' x 1-1/4"	24
VAL1013	RV Water Fill Hose 3' x 1-1/4"	24
VAL1014	RV Water Fill Hose 4' x 1-1/4"	24
VAL1015	RV Water Fill Hose 5' x 1-1/4"	24
VAL1016	RV Water Fill Hose 6' x 1-1/4"	24
VAL1018	RV Water Fill Hose 8' x 1-1/4"	24
VAL1020	RV Water Fill Hose 10' x 1-1/4"	24
VALSS01	Sewersolution™ System	1
VALT11VJ	3" Valve Jockey 3" Hub x 1-1/2" Hub w/cap	1
VALT11AVJ	3" Valve Jockey 3" SPG x 1-1/2" Hub w/cap	1
VALT12VJ	3" Valve Jockey 3" Hub x 2" Hub w/cap	1
VALT12AVJ	3" Valve Jockey 3" SPG x 2" Hub w/cap	1
VALT18AVJ	3" Valve Jockey & 1-1/2" - 3" SPG x 1/2" Hub w/cap	1
VALT30VJ	3" Valve Jockey 3" Hub x 2" Hub, 3" Bay w/cap	1
VALT30AVJ	3" Valve Jockey 3" SPG x 2" Hub, 3" Bay w/cap	1
VALTR38VJ	3" Valve Jockey 3" Hub x 1-1/2" Hub w/cap	1
VALT38	3" Valve Jockey 3" Hub x 1-1/2" Rot. Hub	1

The Sewer Solution

The SewerSolution System is a all-in-one macerator system.

It **Pulverizes** with a water powered high velocity jet nozzle using shear force to pulverize waste and toilet paper.

It **Pumps** utilizing the patented "Venturi Principal" it is strong enough to pump up to 100 feet or even 3 feet up hill with a little 15 psi.

It **Cleans** the whole system after dumping with a swivel jet nozzle. It cleans both upstream (valve, pipe and tank) and down-stream (drain hose)

It is **Easy to Store** in a compact 14" spool

It **includes** a 10' by 3/4" smooth interior non-kinking hose, sewer adapter, hose connect assembly and pump.

Part Number: VALSS01



Sewersolution™ Pump



Sewersolution™ Hose Connector



Sewersolution™ Sewer Adapter

Bladex Waste Products

We also stock selected Bladex waste products manufactured by Valterra. **Valve Handles** are threaded for easy installation and fit Bladex, Valterra and Grentec valves are available with metal or plastic handles. **Waste Valves** are interchangeable with Valterra, Grentec, Anonda, LaSalle Bristol. Included are all seats, nuts and bolts.

Bladex Products			
Stock No.	Description	Color	Carton Quantity
VALT10036MN	Metal Valve Handle	Silver	100 pcs.
VALT10036N	Plastic Valve Handle	Black	100 pcs.
VALT10036GN	Plastic Valve Handle	Gray	100 pcs.



Other Hardware

Baggage Locks

These rugged baggage locks are used in variety of places on boats, RV's or any vehicle with a compartment where security is required. Sizes are available to fit most applications. Locks can be keyed alike or with different keys. 90 degree turn, .750" mounting hole required. Two keys supplied with each lock. Cams and mounting hardware sold separately.

Baggage Locks			
Stock No.	Description	Size	Carton Quantity
BL7300A	Baggage Lock, keyed alike	7/8"	125
BL7400A	Baggage Lock, keyed alike	1-1/8"	125
BL7402A	Baggage Lock, keyed alike	5/8"	125
BL7402D	Baggage Lock, keyed differently	5/8"	100
BL7500A	Baggage Lock, keyed alike	1-3/8"	125

Compartment Latches

Similar to baggage lock without keys. Features a 90 degree turn latch with positive stop mechanism. .750" mounting hole required. Cams and mounting hardware sold separately.

Compartment Latch			
Stock No.	Description	Size	Carton Quantity
BL7200CL	Compartment Latch	5/8"	125
BL7206CL	Compartment Latch	1-1/8"	100

Baggage/Compartment Latches

Baggage/Compartment Latches			
Stock No.	Description	Size	Carton Quantity
BL740CRH	Cylinder Ring	1-1/8"	1000
BL740HN	Hex Nut	-	1000
BL740SW	Spur Washer	1-1/8"	1000
BL740SC	Spring Clip	-	1000
BL740SEM	Sem Screw	-	1000

Hold-Downs

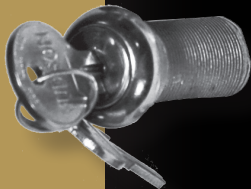
These LaVanture Products hold-downs can be used for hoods or removable covers as well as door holdbacks.

Hold-Downs		
Stock No.	Description	Carton Quantity
LDH5004	4" Door Hook and Keeper Zinc (2 PC)	1
LDH5006	6" Door Hook and Keeper Zinc (2 PC)	50
LDH5006SS	Door Hold SS 6" (2 PC)	1
LDH500SS	Door Hold SS 4" (2 PC)	1

www.lavanture.com | 800.348.7625 | sales@lavanture.com



Baggage Lock



Compartment Latches



Baggage/Compartment Latches



Hold-Down



Baggage Lock Cams

Available in a variety of sizes and offsets sizes these cams add versatility to our baggage and compartment locks. Manufactured from heavy gauge zinc plated steel with length measured from center of hole to end. Custom sizes available. Please contact us for information.

Baggage Lock Cams			
Stock No.	Description	Size	Carton Quantity
BLC1810	Straight Cam	1-5/8"	100
BLC1811	Offset Cam .125"	1-5/8"	100
BLC1812	Offset Cam .250"	1-5/8"	100
BLC1813	Offset Cam .375"	1-5/8"	100
BLC1814	Straight Cam	2-1/8"	100
BLC1815	Straight Cam	1"	500
BLC1816	Straight Cam	1-1/8"	500

Rope Rings

These bright zinc-plated recessed rope rings are used in truck and trailer bodies.

Rope Rings		
Stock No.	Description	Carton Quantity
LB23	Rope Ring Light Duty (Zinc) 1/4" dia	10
LB601	Recessed Rope Ring (Zinc) WLL 285#	1
LB701SM	Surface Mount Rope Ring Zinc 1/4" dia Ring	10
LB703	3" dia Recessed Rope Ring w/ Plastic Bezel	1
LB705	Surface Mount Rope Ring 3.91" Diameter	100
LB801A	HD Recessed Rope Ring (Square)	50
LRR01080	2" x 6" ET Rope Ring Tie Down Strap w/ Fitting	10
LRR01090	Rope Ring With E Track Fitting	4
LB20	D-Ring and Latch (Zinc)	10

Dock Bumpers

Heavy duty black rubber dock bumpers with mounting holes, manufactured from 100% recycled materials helping to reduce pollution and protect our environment.

Dock Bumpers			
Stock No.	Description	Size	Carton Quantity
DB3050	Round	1' x 2-1/2"	200
DB3044	Rectangle Block	3' x 3' x 6"	100
DB32170	Round	1" x 1"	500
LD26U	Rectangle w/Radius	2-1/2" x 1-7/8" x 6"	1



Baggage Lock Cams



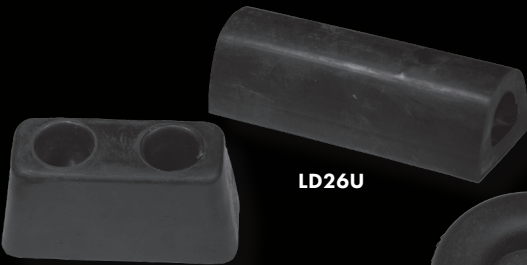
Rope Ring
Light Duty



Recessed
Rope Ring



Surface Mount
Rope Ring



DB3044

LD26U



DB3050



DB32170

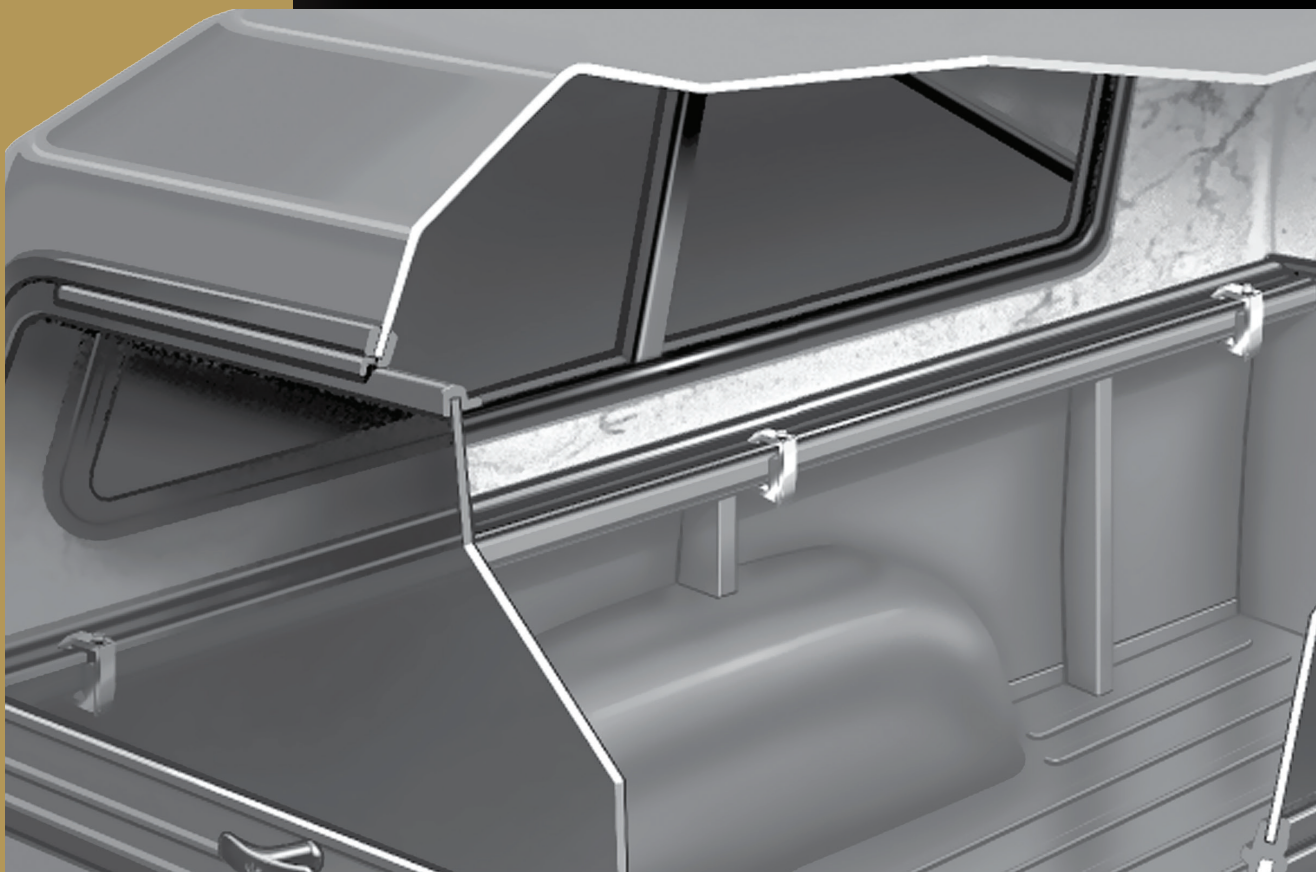
HOLD DOWNS AND DOCK BUMPER



Tite-Lok®

KEEPING THE LID ON...

TITE • LOK CLAMPS



**LaVanture Products is the
national distributor for Tite • Lok® Clamps**

No matter what the model...make ...or application Tite-Lok manufactures a clamp to meet the need and LaVanture Products has them in stock for immediate shipment.

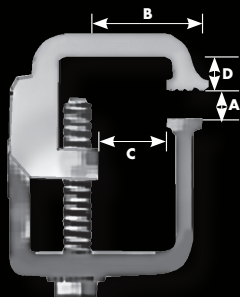
Made from high quality aluminum alloy, Tite-Lok clamps are built tough for long lasting service. These clamps are the best available....because LaVanture only distributes the best products and Tite-Lok is #1 in the industry. If you require a clamp for a special application, contact us for information on custom products.



Our Most Popular Tite-Lok Clamps



Some Clamps are Available Bagged or Carded. Call for Information and Pricing.



- A: Clamping Range**
Minimum and maximum the clamp opens
- B: Major Reach**
Distance the clamp reaches out over the truck rail
- C: Minor Reach**
Distance clamp reaches over the rail less the length of the toothed portion
- D: Depth of Reach**
The distance the clamp reaches in a vertical measurement from the flat of the truck rail.

Specifications and Dimensions						
Stock No.	Description	A	B	C	D	Carton Qty.
TL1	Rail Hugging Clamp	0 to 1-1/2"	1-7/8"	1-1/8"	n/a	50 pcs.
TL2	Rail Hugging Clamp	0 to 1"	1-7/8"	1-1/8"	n/a	50 pcs.
TL101C	Rocking Clamp	0 to 7/8"	2"	1"	n/a	50 pcs.
TL103	Rocking Clamp	0 to 7/8"	2-3/4"	1"	n/a	50 pcs.
TL105	Rocking Clamp	0 to 7/8"	1-3/4"	1"	0.854"	50 pcs.
TLAD	Fiberglass/Aluminum Rail Clamp	0 to 1-3/4"	1-5/8"	1-1/8"	n/a	50 pcs.
TL123	C-Style Clamp	0 to 2-1/4"	2-3/16"	1-1/4"	n/a	50 pcs.
TL150	Ford F150 97-99	0 to 1-3/8"	2-1/2"	1"	n/a	50 pcs.
TL250	Ford F250/350 99- newer	0 to 1-3/8"	3"	1"	n/a	50 pcs.
TL2002	Classic Clamp	0 to 1-3/8"	1-3/4"	1"	n/a	50 pcs.
TL2007	Classic Clamp	0 to 1-3/8"	2-1/2"	1-3/4"	n/a	50 pcs.
TL2028	Tonneau & Lid Clamp	0 to 3/4"	1-1/2"	1"	1"	50 pcs.

All above parts assembled

The items listed above are just a few of the most popular clamps we have in inventory. The complete line of Tite-Lok Clamps is available for immediate shipment. Please us contact for information on all Tite-Lok products.

www.lavanture.com | 800.348.7625 | sales@lavanture.com

Rail Hugging Clamps

TL1 and TL2 are designed for mounting truck caps or lids with fiberglass or aluminum rails. TLAD Clamps are designed for mounting truck caps with fiberglass or aluminum rails.

Rocking Clamps

The top bracket rotates for easy installation without dismantling the clamp (most applications). TL103 , TL105 and under rail hugging clamps are designed for mounting truck caps with fiberglass or aluminum rails. TL101C is designed with a 3 inch bolt for mounting aluminum rail truck caps or covers with no clamping surface.

C-Style Clamps

TL123 is designed for mounting aluminum or fiberglass rail caps or covers. (assembled only)

Ford Mounting Clamp

TL250 is designed for 1999 and newer Ford heavy duty 250 & 350 trucks. TL150 is designed with a 2" cut width for shipping or mounting caps or covers with extra heavy wood rails. (assembled only)

Classic Clamps

TL2002 is designed for mounting truck caps or covers with fiberglass or aluminum rails. TL2007 is a specialty designed clamp with 3/4" cut width for extra reach for mounting truck caps with fiberglass or aluminum rails.

Tonneau & Lid Clamp

TL2028 is designed for mounting fiberglass lids, primarily A.R.E. lids and other lids with similar rails.

TITE • LOK CLAMPS



Krylon® Industrial Paint-All™ Enamel Paints

Paint-All® Enamel Paints offer an excellent value for a durable, general industrial use spray paint. This high gloss paint dries tack-free in 18 minutes.

- Equipped with EZ TOUCH® Standard Nozzle
- Acrylic enamel formulation

Recommended Uses: For use on ceramic, plaster, glass, metal, wood, and most other surfaces.



Dupli-Color

Dupli-Color Undercoating

Dupli-Color undercoating forms a tough, flexible coating that protects against rust, corrosion, road salt, alkali and acids. Resists abrasion, will not flake or chip off under vibration. Deadens Sound!!

Spray Products

Stock No.	Description	Color	Size	Carton Quantity
LPC201	Enamel	Shiny Aluminum	10 oz	12 cans
LPC202	Enamel	Gloss White	10 oz	12 cans
LPC203	Enamel	Gloss black	10 oz	12 cans
LPC207	Enamel	Flat Black	10 oz	12 cans
LPC209	Enamel	Gloss Almond	10 oz	12 cans
LPC212	Primer	Red Oxide	10 oz	12 cans
LPC213	Primer	Gray	10 oz	12 cans
LPC101	Undercoater	Black	20 oz	12 cans

SprayOn® All Purpose Silicone Lube

All Purpose Silicone Lube is an economical lubricant for applications where petroleum based products are not desired. This 5% silicone formula protects against air and moisture to retard oxidation and corrosion. It virtually eliminates friction and sticking to improve high-speed production. Leaves a long lasting film that is compatible with most surfaces.

- 5% silicone formula
- Reduces friction and sticking; protects against corrosion and oxidation with an invisible film that repels water
- Compatible with most surfaces; will not attack most plastics
- Will not interfere with painting or decorating
- Effective from -50°F to +375°F
- Aerosol is equipped with SPRAY ANYWAY™ valve and extension tube

Recommended Uses: Rubber moldings, windows, sliding wood surfaces, sewing equipment, sliding racks, dissimilar metals, springs, leather, doors, hinges, weather-stripping and plastic assemblies.

SprayOn Silicone Spray

Stock No.	Description	Color	Size	Carton Quantity
LPC16024	Silicone Lube	Clear	10 oz	12 cans



Multi-Purpose Spray Adhesive

WLO7000 is a multi-purpose industrial spray adhesive formulated for bonding a variety of light-weight materials with a long lasting secure bond. It provides high coverage, has a low soak-in factor and contains no ozone depleting CFS's.

Recommended uses include: woodworking, insulation installation, production line work and assembly.

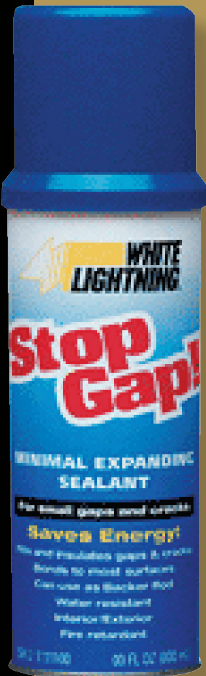


Stop Gap!™ Expanding Insulating Foam

Stop Gap!™ Minimal Expanding Insulating Foam expands to take the shape of gaps and crevices forming an airtight and waterproof bond to most surfaces. Stop Gap!™ dries tack free in 15 minutes and cures in 8 hours. It can be trimmed, sanded and painted. Exposure to sunlight will cause discoloration, so exterior use-age requires painting.

For use on: wood, metal, masonry, glass and most plastics

White Lightning Products				
Stock No.	Description	Color	Size	Carton Quantity
SP7000	Multi Purpose Adhesive		16.75 oz	12 cans
LS500	Expanding Foam	Gray	24 oz	12 cans
LS500-CLN	Cleaner	NA	12 oz	6 pc
LS500-GUN	Gun	NA	NA	1 pc



3M Glass Cleaner

An aerosol cleaner for all glass surfaces including windows, wind-shields, mirrors, and side glass. May also be used to clean auto-motive vinyl, interior plastic, and clear plastic. 3M Glass Cleaner is non-flammable, and will not affect painted surfaces.

3M Glass Cleaner				
Stock No.	Description	Color	Size	Carton Quantity
LPC111	Glass Cleaner	Clear	19 oz	12 cans



SPRAY PRODUCTS

Black Nitride & Stainless Steel at OEM Pricing

Since 1969 LaVanture Products has been providing the best total package of products and services to our customers. We invest in our future so we can continue to meet market demands and customer needs.

This Gas Spring catalog features innovative, high quality products to meet the challenging applications of today's markets. All of these products meet our high quality standards and have passed a rigid testing program.

Additional Sizes Available Call for Information and Pricing

- Factory Direct Pricing
- Call For Volume Quotation
- Full Line in Stock for Immediate Delivery
- Chrome Rods Available by Special Order

Black Nitride Body No.	Stainless Steel Body No.	Extended (inches)	Compressed (inches)	Stroke (inches)	Rod Diameter (mm)	Tube Diameter (mm)	Nitrided End Fittings	End Fittings	Force available in stock for Black Nitride or Stainless Steel Gas Springs																			
									10	20	30	40	45	50	55	60	65	70	75	80	85	90	100	120	150	200	250	
LGP6-750	LGP6S-750	7.50	5.50	2.00	6	15	A	B	B	B	B	SB				B			B									
LGP6-960	LGP6S-960	9.60	6.45	3.15	6	15	A	B									B		B									
LGP6-100	LGP6S-100	10.00	7.00	3.00	6	15	A	B			B	B					B		B									
LGP8-119	LGP8S-119	11.90	8.40	3.50	8	18	A	B			B					B					B		B	B				
LGP6-120	LGP6S-120	12.00	8.50	3.50	6	15	A	B		B	SB	B				B			B		B							
LGP6-150	LGP6S-150	15.00	9.50	5.50	6	15	A	B		B	SB	B		B		B			B									
LGP8-153	LGP8S-153	15.25	9.51	5.50	8	18	A	B											B									
LGP6-170	LGP6S-170	17.00	10.25	6.75	6	15	A	B		B	SB	SB		B		SB		B	B		B							
LGP8-170	LGP8S-170	17.00	11.00	6.00	8	18	A	B		B	B					B					B		B	B				
LGP6-185	LGP6S-185	18.50	11.25	7.25	6	15	A	B		B	B		B			B			B									
LGP8-185	LGP8S-185	18.50	11.25	7.25	8	18	A	B								B			B		B		B	B				
LGP6-200	LGP6S-200	20.00	12.00	8.00	6	15	A	B	B	B	SB	SB	B	B		SB												
LGP8-200	LGP8S-200	20.00	12.00	8.00	8	18	A	B		B	B					SB		B	B	B		B	B	B	B			
LGP8-263	LGP8S-263	26.32	15.82	10.50	8	18	A	B			B				B				B		B		B	B	B			
LGP10-280	LGP10S-280	28.00	16.50	11.50	10	22	E	F															B	B	B	B	B	
Stock Items Available for Immediate Shipment Contact Us for Custom Engineered Springs									SB = Standard Black and Stainless Stock B= Standard Black Stock																			

ALL LAVANTURE PRODUCTS GAS SPRINGS CARRY A TWO YEAR LIMITED WARRANTY.

If We Sell It...We stand Behind It !!

See Application Guide on Page 57

We stock a large inventory of quality engineered Gas Springs and Accessories. The gas springs are available in both Black Nitride and Stainless Steel all at factory pricing and in stock for immediate shipment.

Black Nitride Gas Springs

The LaVanture black nitride gas spring incorporates a strong annealed steel rod with a nitride coating for added corrosion resistance, especially when used with the composite end fitting.

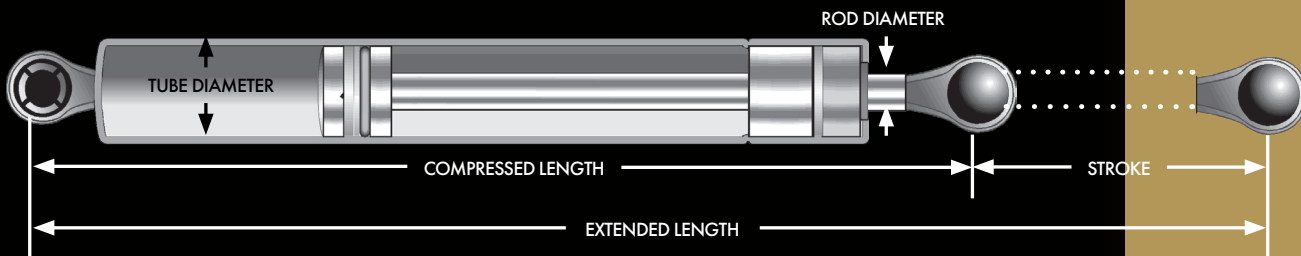
Stainless Steel Gas Springs:

The LaVanture stainless steel gas spring is made of corrosion resistant 316 stainless steel material. All the stainless parts have a specially prepared surface to provide additional hardness and corrosion resistance. Add our composite end fitting and you will have a gas spring that will not rust or corrode even in the harshest environments.

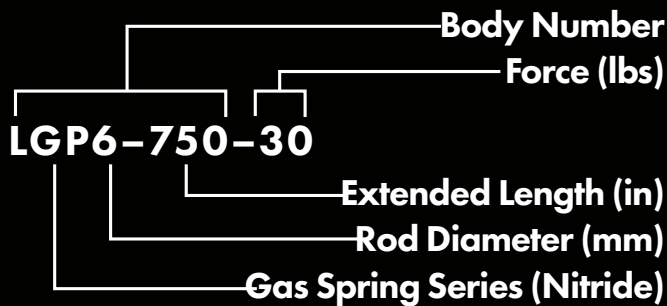
All LaVanture Gas Springs Carry a Limited Two Year Warranty

The LaVanture Gas Spring is a self-contained, nitrogen-driven counterbalance product which provides uniform handle forces, non-catastrophic failure and extended years of service.

How to Measure:



LaVanture Part Number Configuration:



Custom Gas Spring

We also provide design and engineering services for custom gas springs to meet special application specifications. Our engineering staff can design to your specifications including up to 400 pounds of pressure, rods up to 14 mm, optional dampening and all fittings to meet requirements.

Applications:

- Tool Boxes
- Luggage Doors
- Truck Cap Windows
- Utility Boxes
- Tonneau Covers
- Fiberglass Doors
- Work Truck Doors
- Boat Hatches

LaVanture Black Nitride Gas Springs are used where exceptional quality combined with a sleek overall black appearance are required.

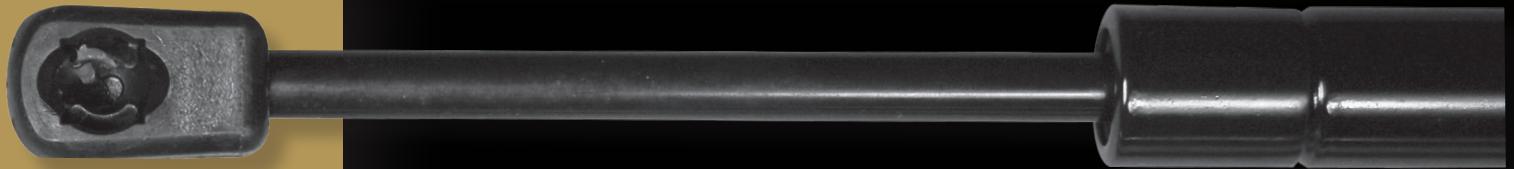
Stainless Steel Gas Springs are available for all marine applications where rust and corrosion resistance is needed as well as medical and food service applications where a high degree of cleanliness is required.

Also Available:

- Custom Dampening
- Locking Springs

GAS SPRINGS AND ACCESSORIES

CUSTOM SIZES
AVAILABLE



Safety Clips – 316 Stainless Steel *

Stock No.	Size	A	B	C
LSC10(B)	10mm	0.354	0.039	0.492
LSC13(B)	13mm	0.433	0.047	0.630
LSC16	16mm	0.618	0.050	0.827

*** UOM:**
Assumed Inches
Unless Noted

Ball Studs

Stock No.	Material	A	B	C	D	E	F	G	H
LBS10	Steel Zinc	0.25	9.88mm	9.96mm	0.660	0.234	1.200	0.110	0.540
LBS10A	Steel Zinc	0.25	9.88mm	9.96mm	0.660	0.234	1.410	0.110	0.750
LBS10S	Stainless	0.25	9.88mm	9.96mm	0.660	0.234	1.200	0.110	0.540
LBS10B	Steel Zinc	0.25	9.88mm	9.98mm	0.660	0.234	1.660	0.110	1.000
LBS10BS	Stainless	0.25	9.88mm	9.98mm	0.660	0.234	1.660	0.110	1.000
LBS13	Steel Zinc	0.28	12.83mm	12.98mm	0.750	0.275	1.438	0.122	0.688
LBS13S	Stainless	0.28	12.83mm	12.98mm	0.750	0.275	1.438	0.122	0.688
LBS13B	Steel Zinc	0.28	12.83mm	12.98mm	0.785	0.275	1.785	0.142	1.000
LBS16	Steel Zinc	0.28	15.88	15.88	0.913	0.318	1.700	0.215	0.787

End Fittings – Requires Safety Clips *

Stock No.	Material	A	B	C	D	E	F	G
LEF-B3	Steel Zinc	0.645	16mm	0.36	1.180	0.53	13mm	M8 x 1.25
LEF-C	Black Nitride	0.509	11mm	0.28	0.830	0.42	10mm	M6 x 1.00
LEF-D	Stainless	0.509	11mm	0.28	0.830	0.42	10mm	M6 x 1.00
LEF-E	Black Nitride	0.645	16mm	0.36	1.180	0.53	13mm	M8 x 1.25
LEF-F	Stainless	0.645	16mm	0.36	1.180	0.53	13mm	M8 x 1.25
LEF-K	Black Nitride	0.509	11mm	0.28	0.709	0.42	10mm	M6 x 1.00
LEF-L	Stainless	0.509	11mm	0.28	0.709	0.42	10mm	M6 x 1.00
LEF-N	Steel Zinc	0.509	11mm	0.28	0.830	0.42	10mm	M6 x 1.00
LEF-O	Steel Zinc	0.509	11mm	0.28	0.709	0.42	10mm	M6 x 1.00

LEF-C,D,K,L,N,O Use LSC10 Clip and LEF (B3, F,E) Use LSC13 Clip

End Fittings – Eyelets *

Stock No.	Material	A	B	C	D	E	F
LEF-G	Zinc Alloy	0.354	0.709	0.513	0.472	0.388	M6 x 1.00
LEF-H	Zinc Alloy	0.354	0.709	0.408	0.472	0.388	M6 x 1.00
LEF-J	Zinc Alloy	0.354	0.709	0.263	0.472	0.388	M6 x 1.00

End Fittings – Use with 10MM Ball Stud *

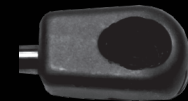
Stock No.	Material	A	B	C	D	E	F
LEF-A	Black Composite	0.709	0.679	0.697	0.679	1.175	M6 x 1.00
LEF-B	Black Composite	0.709	0.793	0.644	0.793	1.12	M6 x 1.00
LEF-D6	Black Composite	0.709	0.642	0.512	0.645	0.455	M6 x 1.00
LEF-V	Black Composite	0.709	0.697	0.697	0.679	1.175	M6 x 1.00

LEF-A Has a Nitrided Safety Clip LEF-V Has a Stainless Safety Clip

End Fittings – Use with 13MM Ball Stud *

Stock No.	Material	A	B	C	D	E	F
LEF-Q7	Black Nitride	0.800	0.705	0.595	0.719	1.180	M6 x 1.00
LEF-Q8	Black Nitride	0.866	0.705	0.595	0.719	1.300	M8 x 1.25

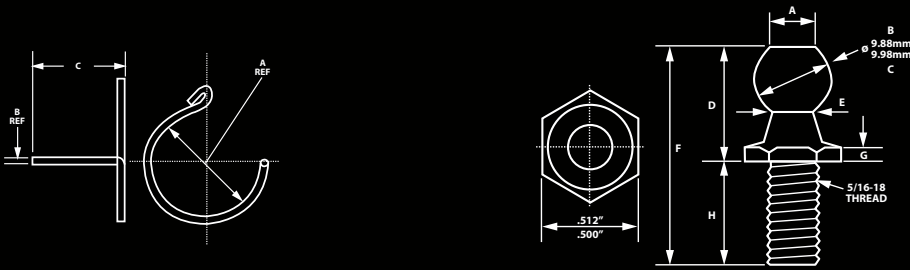
CUSTOM SIZES
AVAILABLE



Safety Clips, Ball Ends and End Fittings

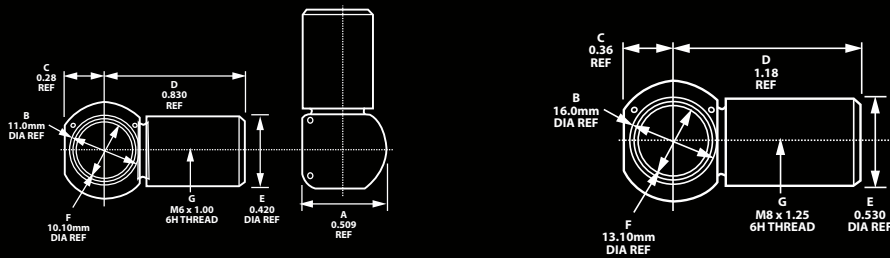
LSC10 LSC13 LSC16

LBS10 LBS13 LBS16



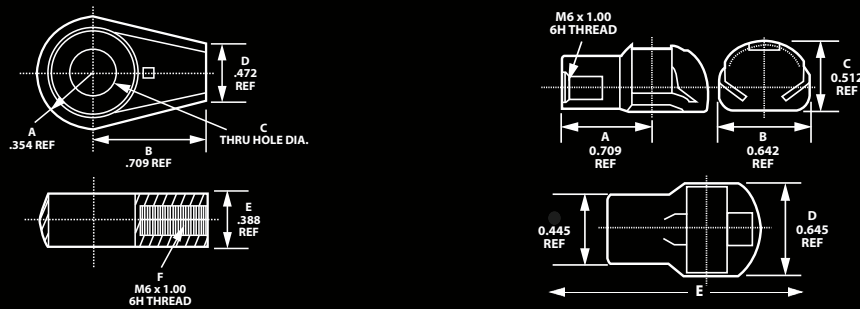
LEF C-D-K-L-N-O

LEF E-F

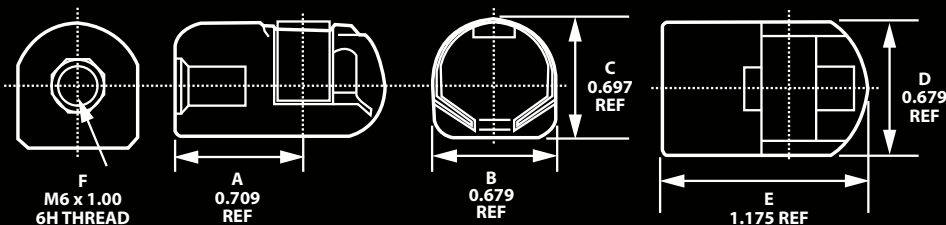


LEF G-H-J

LEF-B-D6-ERA-Q-Q6-Q7-Q8



LEF-A (V)



Note:

Ball Ends are available in various sizes and in Steel Zinc and Stainless Steel. See chart on page 56 for details.

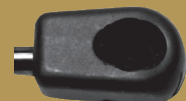
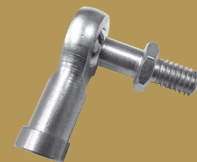
End Fittings are available in various sizes and configurations. Materials available are Steel Zinc, Black Nitride, Zinc Alloy, Black Composite and Stainless Steel. See chart on page 56 for details.

Series LEF end fittings N, C, D, O, K, and L require LSC10 Safety Clip.

LEF-V has a Stainless Steel Safety Clip

CUSTOM END
FITTINGS
AVAILABLE

GAS SPRINGS AND ACCESSORIES



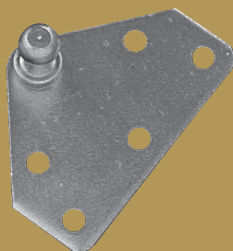
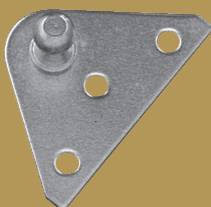
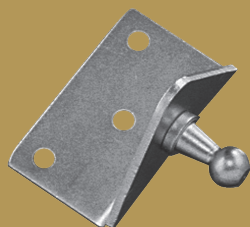
Mounting Brackets

LPC stocks a wide variety of Mounting Brackets in several materials and finishes. Stock Numbers are coded as follows:

LPBxx	Steel Zinc Plate
LPBxxA	Aluminum
LPBxxB	Black Powder
LPBxxS	Stainless
LPBxxL	Long Ball Stud
LPBxxR	Reverse Ball

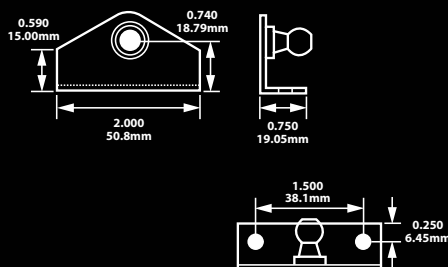
Please use these stock number designations when ordering.

Note: (B) Powder Coated are individually bagged



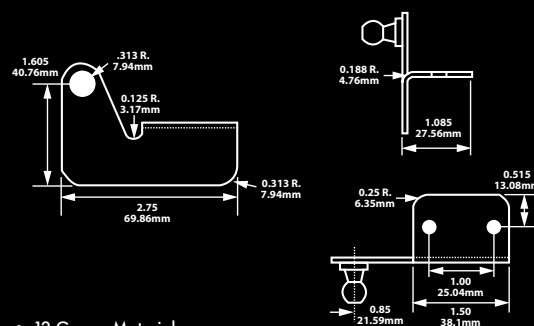
Mounting Brackets 10mm

LPB10R (RS, RB)



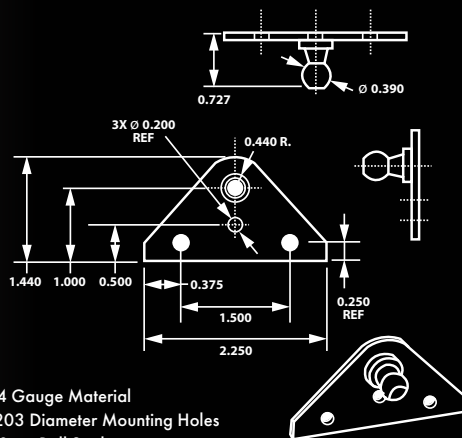
- 14 Gauge Material
- .203 Diameter Mounting Holes
- 10mm Ball Stud

LPB11 (B, S)



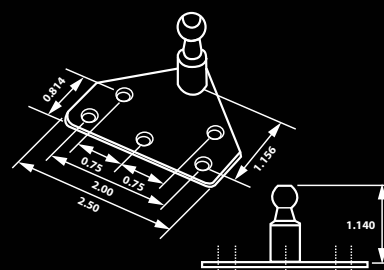
- 12 Gauge Material
- .203 Diameter Mounting Holes
- 10mm Ball Stud

LPB12 (B, S)



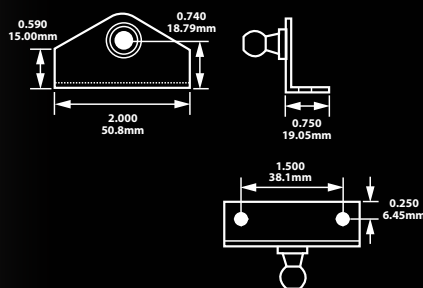
- 14 Gauge Material
- .203 Diameter Mounting Holes
- 10mm Ball Stud

LPB13(L)



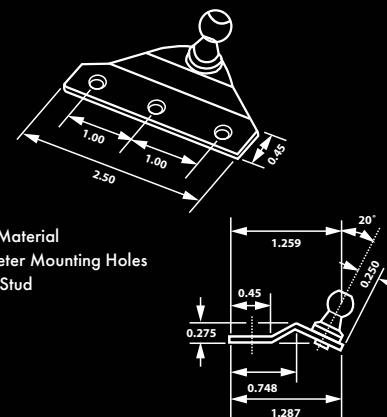
- 14 Gauge Material
- .203 Diameter Mounting Holes
- 10mm Long Ball Stud

LPB15 (B,S)



- 14 Gauge Material
- .203 Diameter Mounting Holes
- 10mm Ball Stud

LPB24 (B,S)



- 14 Gauge Material
- .203 Diameter Mounting Holes
- 10mm Ball Stud

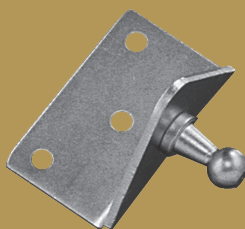
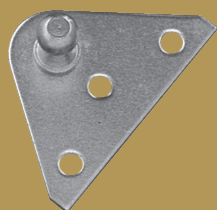
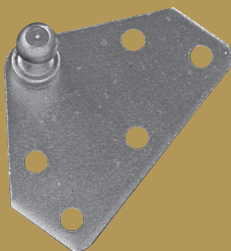
Mounting Brackets

LPC stocks a wide variety of Mounting Brackets in several materials and finishes. Stock Numbers are coded as follows:

LPBxx	Steel Zinc Plate
LPBxxA	Aluminum
LPBxxB	Black Powder
LPBxxS	Stainless
LPBxxL	Long Ball Stud
LPBxxR	Reverse Ball

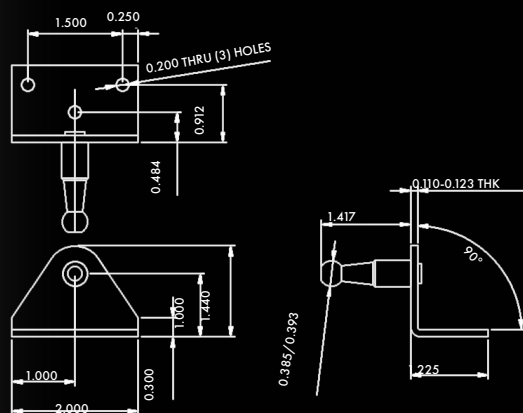
Please use these stock number designations when ordering.

Note: (B) Powder Coated are individually bagged

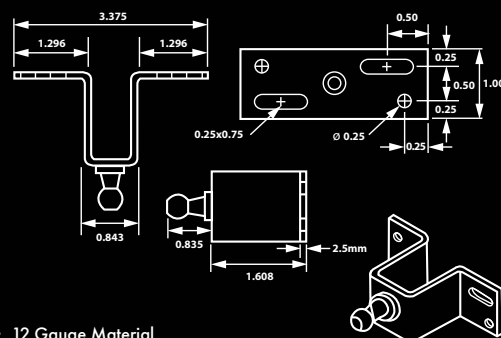


Mounting Brackets 10mm

LPB60XL

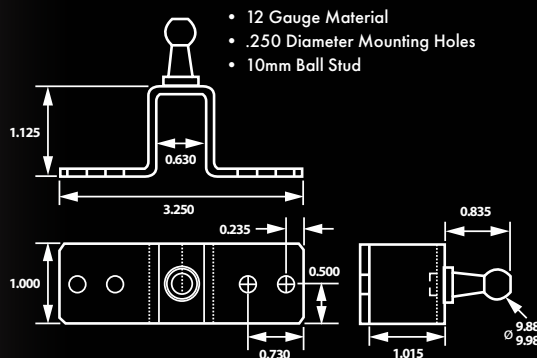


LPB69



- 12 Gauge Material
- .250 Diameter Mounting Holes
- 10mm Ball Stud

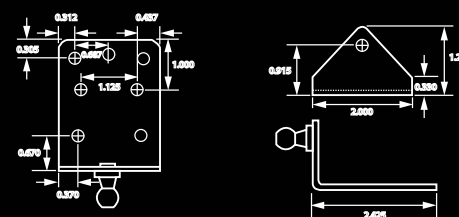
LPB70



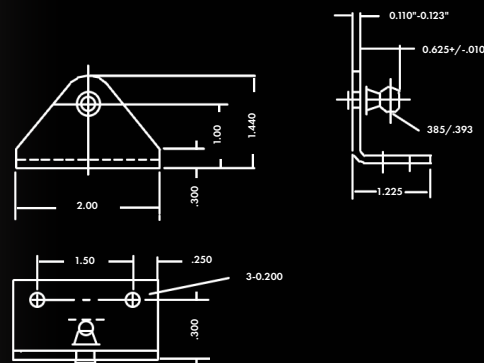
- 12 Gauge Material
- .250 Diameter Mounting Holes
- 10mm Ball Stud

LPB75 (B)

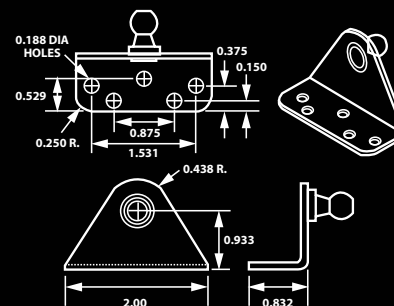
- 13 Gauge Material
- .200 Diameter Mounting Holes
- 10mm Ball Stud



LPB80 (R)



LPB85 (R)



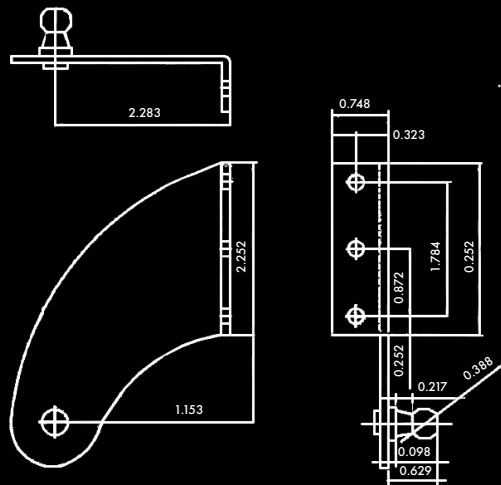
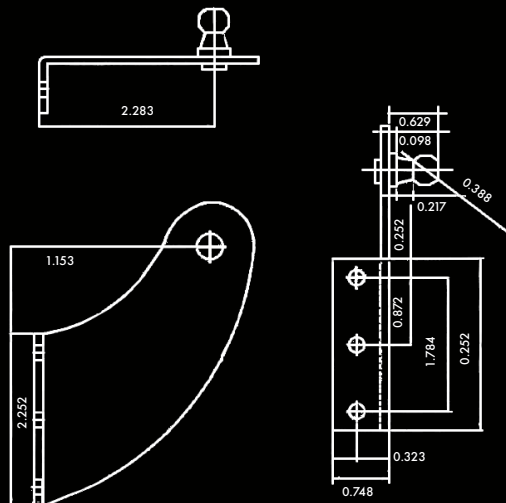
- 13 Gauge Material
- .188 Diameter Mounting Holes
- 10mm Long Ball Stud



LPB88 (S)

LPB89 (S)

CUSTOM
BRACKETS
AVAILABLE

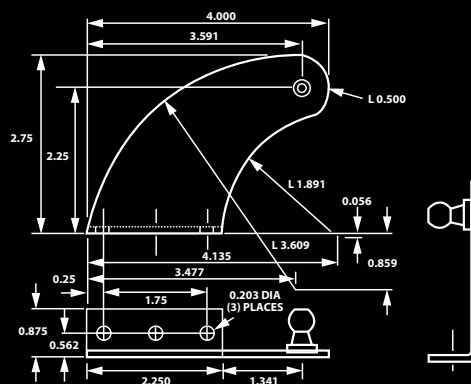
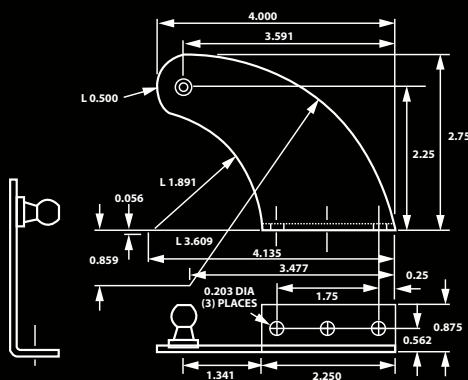


- 11 Gauge Material
- .203 Diameter Mounting Holes
- 10mm Ball Stud
- Left Curved Bracket

- 11 Gauge Material
- .203 Diameter Mounting Holes
- 10mm Ball Stud
- Right Curved Bracket

LPB97R

LPB99R

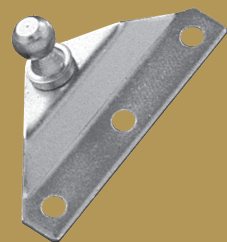


- 11 Gauge Material
- .203 Diameter Mounting Holes
- 10mm Ball Stud
- Left Curved Bracket

- 11 Gauge Material
- .203 Diameter Mounting Holes
- 10mm Ball Stud
- Right Curved Bracket

KEY

A- Aluminum B- Black L- Long R- Reverse Ball
S- Stainless Steel SEP- SS Electro Plate XL- Extra Long Ball



GAS SPRINGS AND ACCESSORIES

Mounting Brackets

LPC stocks a wide variety of Mounting Brackets in several materials and finishes. Stock Numbers are coded as follows:

LPBxx	Steel Zinc Plate
LPBxxA	Aluminum
LPBxxB	Black Powder
LPBxxS	Stainless
LPBxxL	Long Ball Stud
LPBxxR	Reverse Ball

Please use these stock number designations when ordering.

Note: (B) Powder Coated are individually bagged

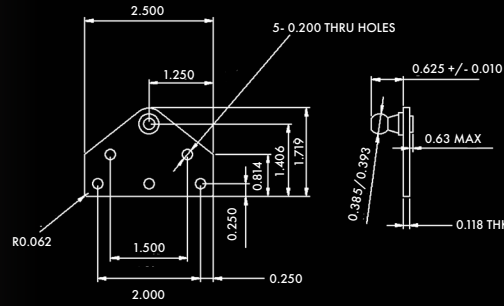
Custom Gas Spring

We also provide design and engineering services for custom gas springs to meet special application specifications. Our engineering staff can design to your specifications including up to 400 pounds of pressure, rods up to 14 mm, optional dampening and all fittings to meet requirements.

For additional information on Custom Gas Springs call our information hotline at 800-348-7625 or visit the Gas Springs section of our web site at www.lavanture.com/customgassprings

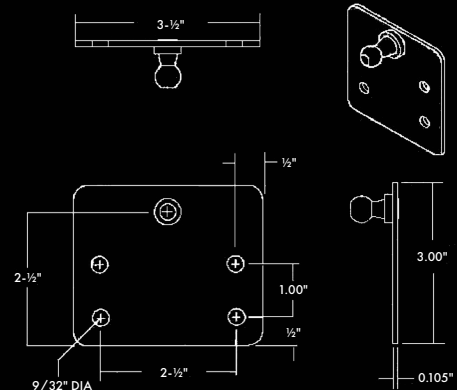
13mm Mounting Brackets

LPB1313



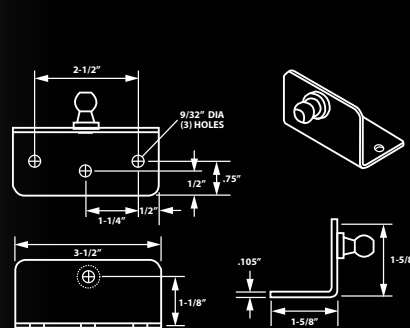
- 13 Gauge Material
- .203 Diameter Mounting Holes
- 13mm Ball Stud

LPB35 (S)

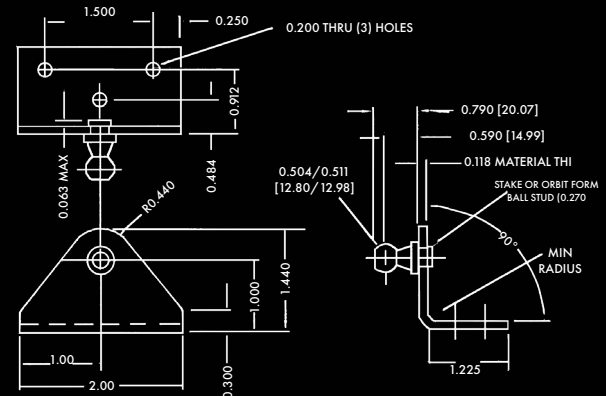


- 13 Gauge Material
- .203 Diameter Mounting Holes
- 13mm Ball Stud

LPB52 B,RS,S



LPB6013



For additional information on Custom Gas Springs call our information hotline at 800-348-7625 or visit the Gas Springs section of our web site at www.lavanture.com/customgassprings

Gas Spring Application Assistant

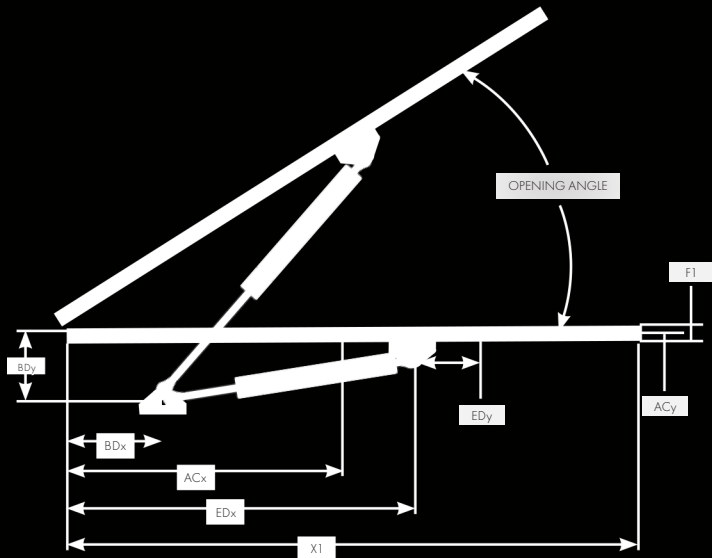
GAS SPRINGS PER APPLICATION (1 OR 2) _____ DOES LID HAVE A HOLD CLOSE LATCH? _____

INITIAL ANGLE _____ FINAL OPENING ANGLE _____ WEIGHT OF LID (LBS) _____

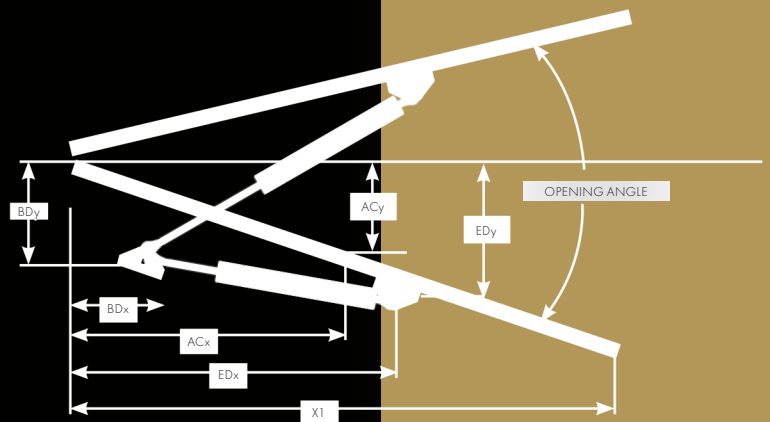
DIMENSIONS (") _____ X1 _____ X2 _____ Y1 _____ Y2 _____

CG_x HORIZONTAL (") _____ AC_y VERTICAL (") _____

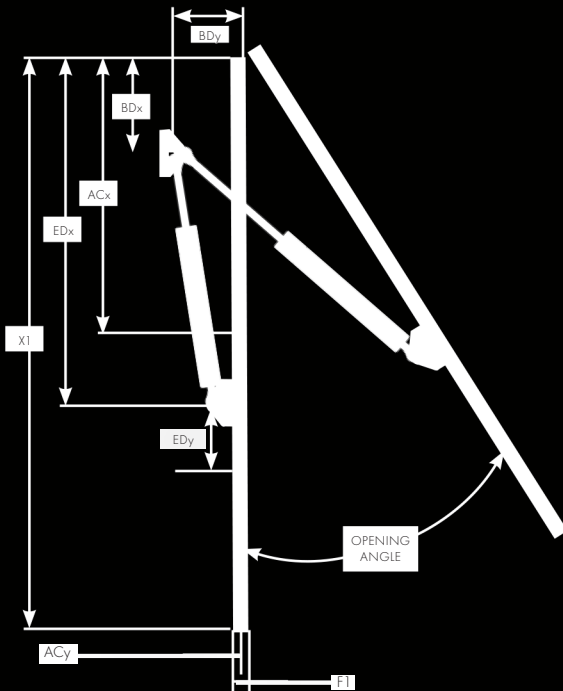
PREFERRED MOUNTING POINTS ("): ED_x _____ ED_y _____ BD_x _____ BD_y _____



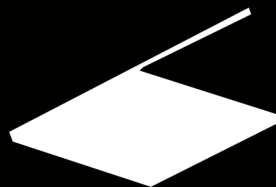
☐ HORIZONTAL OPENING



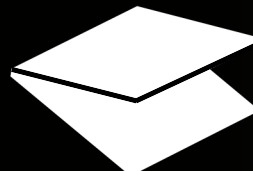
☐ INCLINED OPENING



☐ VERTICAL OPENING



HORIZONTAL



INCLINED



VERTICAL

Innovative Products For Challenging Applications

Since 1969 LaVanture Products Company has been providing customers with high quality Edge Trims, Seals and Foam Tape to meet the challenging applications of todays markets. All of these products meet our quality standards and have passed a rigid testing program. If we sell it... we stand behind it!!

- EPDM Seals
- Trim Seals
- Edge Trim
- Foam Tapes
- Butyl Tapes
- Caulks and Sealants

LaVanture Products is your Competitive Source for a Complete Line of Innovative Products In-Stock for Immediate Delivery.

See our sealant catalog for other parts.





**Over 15,000 parts in stock
and ready to ship for all your
applications!**



www.lavanture.com | 800.348.7625 | sales@lavanture.com



CHECK OUT OUR COMPLETE LINE OF PRODUCTS



Molded Extruded | Trims & Seals | Hardware

3806 Gallatin Way
Post Office Box 2088
Elkhart, IN 46515-2088

Phone: 574-264-0658
Fax: 574-264-6601
E-mail: sales@lavanture.com

www.lavanture.com

